

LET'S SHOW

Beach Party

JUNE 7 - 11, 2023
at Brookside Equestrian Park

\$2,000 Riverbend Equestrian Palm Tree Jumper Classic
2'3 Flamingo Equitation Classic
2'9 Ken Cohen Palm Tree Equitation Classic
\$5,000 Clean Living Flamingo Hunter Derby
\$1,000 Brookside Cup Jumper Relay
\$2,000 Trainer Equitation
\$2,000 "Lori Clark" 2' Hunter Derby
Running of the Flamingos

PINK FRIDAY, HAWAIIAN SHIRT WEEKEND



**FEI APPROVED • Approved by PCHA, SAHJA,
OUTREACH USHJA, NSBA, CPHA and SNHSA**
Flamingo Enthusiasts International

MUST READ INFO

The following information has been put together for Exhibitors/Trainers/Owners, to help them understand what memberships, and or horse nominations, may be required. And, what the basic fees are for the association approvals of the Let's Show and Brookside Hunter Jumper shows for 2023.

The approving Associations this year are: USHJA Outreach, PCHA, CPHA (Medals only), Sierra Nevada Horse Show Association (SNHSA), National Snaffle Bit Association (NSBA), and Sacramento Area Hunter Jumper Association (SAHJA).

Each approving association has show requirements that shows and show managers must meet to qualify for their approval. Items such as per horse fees, Licensed Judges, Licensed Course Designers, Medical Staff, Stewards, Safety protocols, Veterinarian, Farrier, as well as facility insurance. In addition, the California Equine Medicine Monitoring Program (CDFA Drug), requires a fee of \$14.00 per horse at every show, whether they are showing or not.

IF you are riding for Year End Awards or Medal qualifying, or other association offerings, memberships MUST be current prior to the show! Memberships ARE NOT required to "show", but per horse fees do apply for some organizations.

USHJA Outreach Competitions

The shows hosted by Brookside or Let's Show do NOT require USHJA Outreach membership for exhibitor, horse, trainer or owner to SHOW. It is encouraged but NOT required. And membership is FREE.

Membership at the USHJA Outreach level or higher, such as a USHJA active/competing membership, is required to earn points and awards for Year End prizes and to participate at the Halloween Show, which will host the USHJA Outreach Festival this year. USHJA Outreach membership is FREE. Free to Exhibitor, Free to Exhibitor/Owner, Free to Trainer ... so why NOT become a USHJA Outreach member?

Trainers do NOT have to be USHJA or USHJA Outreach members to participate at a Brookside or Let's Show event. Horses are NOT required to be USHJA recorded and there is no microchip requirement to show at a Brookside or Let's Show horse show, but if already done - great!

There is NO non member or show pass fee. There is a \$2.00 USHJA OUTREACH & SAHJA per horse fee AND A \$3 PCHA fee to be collected for all entered horses. IF you have a current USHJA Outreach membership or USHJA active membership—enter the # on the entry blank. IF your horse has been recorded with USHJA or Microchipped, fill in #'s on the entry blank. IF you are a JR or AM or Professional - PLEASE fill in on the entry blank.

REMINDER: IF you are planning to show at a USEF rated show - there are different MEMBERSHIP requirements for exhibitor, trainer, owner, and Horse. Please check with show management.

USHJA (United States Hunter Jumper Assoc)

Brookside and Let's Show are not USEF/USHJA shows and do NOT require USEF/USHJA memberships for exhibitor, horse, trainer or owner. HOWEVER: IF you have a current membership, fill in the # on the entry blank. IF the horse has been registered and or microchipped - fill in the # on the entry blank.

PCHA (Pacific Coast Horsemen Assoc)

Exhibitors, who are current PCHA members, earn points towards yearend awards for almost every division at the horse show in Hunters/Equitation/Jumpers. Riders also qualify for their Medal Finals, PCHA rules mostly mirror USEF and are followed and monitored by Show Stewards.

Membership is \$85.00 Jr or Sr, \$1000 lifetime, and is required to Participate in Medal Classes or for points towards year end awards. Membership is NOT required to show.

There is a \$3.00 per horse fee to be collected for all entered horses. There is NO show pass fee or Non-Member fee.

IF you have a current membership - fill in the # on the entry blank.

CPHA (Calif. Professional Horsemen Assoc)

Exhibitors and their trainers must be a member in order to RIDE in the offered CPHA Medal Classes and to qualify for the CPHA Medal Finals. CPHA rules mostly mirror USEF and are followed and monitored by Show Stewards. Membership is \$75 Jr or Am and \$130 for professionals. Reference their website for Green Hunter incentive. IF you have a current membership - fill in the # on the entry blank.

NSBA (National Snaffle Bit Assoc)

Exhibitors are NOT required to be a member to show. Membership is required to compete for yearend awards in approved divisions. Registration for SMART POINTS is available for Junior exhibitors to earn incentive credits in NSBA pointed classes. There is NO per horse fee unless you show in NSBA classes, and there is NO show pass fee. IF you have a current membership - fill in the # on the entry blank. Must be NSBA member to ride in NSBA designated classes.

SAHJA (Sacto. Area Hunter Jumper Assoc)

Exhibitors are required to be current members only in order to qualify for the year end awards, and to ride in and qualify for the Medal Finals. Horse Nomination is required. Individual Membership is \$28.00, Plus owner is required to be current member and Horse nomination is \$10 Every Horse entered at the show is assessed a \$2.00 fee. There is NO show pass fee. SAHJA membership IS NOT required to show. IF you have a current membership - fill in the # on the entry blank.

SNHSA (Sierra Nevada Horse Show Assoc)

Membership is required only to earn points to qualify for the year end awards. Membership is required for the trainer and rider to compete in their classes. Membership IS NOT required to show.

Summary:

In closing, to show at the Horse shows hosted by Let's Show and Brookside, NO membership is required to any association.

To accumulate points/qualify for Medals/qualify for Finals (individual, owner, horse, trainer etc) for the association(s) of interest, then a membership is required.

Participating horses at the Horse show will be assessed the per horse fee for some approving associations, the \$14 California Drug fee, and other General show fees (grounds, stall, haul-in, office etc) as defined in the prize list. We hope this helps you to plan for your show year and have fun!

Ears Up!

Let's Show and Brookside Show Management.



The Let's Show Horse Show

Judges

Mrs. Lindsay Costigan (H/J/EQ)	California
Ms. Diane Carney (H/EQ)	Florida
Ms. Nancy Green (H/EQ)	Washington
Mrs. Raizy Goffman (H/EQ)	California
Ms. Jean Marie Dunford Miller (J/EQ)	Virginia

Staff

Mr. Trevor Peterson	Technical Coordinator
Ms. Peggy Fackrell	Show Manager
Mr. Eric Torres & Mr. Mike Neilsen	Course Designers
Ms. Laura Hales	USEF Steward
Ms. Lorraine Smith, Ms. Teresa Canada, Ms Denise Wiemer	Show Secretaries
Mr. Art Fingerle	EMT
Ben Garcia & Assoc.	Farrier
Dr. Garfinkel, DVM	Veterinarian (209) 607-7047
Mr. Terrell, Ms Sheila Day,	
Mr. Marco Alfaro, Mr. Jason George	Starter/Announcers
Ms. Becca	Hospitality
Ms. Teresa Amaro	Awards

Entries Close Monday, June 2, 2023
Enter online at www.HorseShowTime.com

Mail Entries to:

Beach Party Brookside, 11120 Bradley Ranch Rd., Elk Grove, CA 95624
 or email to letsshowentries@gmail.com
 Please no text or Facebook entries
 Call (916) 584-5407, Lorraine

Manager: Peggy Fackrell
 (916) 947-4305 - letsshow@earthlink.net

Feed & Bedding: (916) 682-1403

Show Approvals: PCHA, SAHJA, OHJA, OUTREACH USHJA, NSBA, SNHSA

Host Hotel

The Hyatt Place Rancho Cordova (916) 635-4799

Bitsy Shields Equitation Challenge

Entry Fee \$75

403. Flat **404. Gymnastics** **405. Equitation Over Fences**
Open to all Short/Medium/Long Stirrup and Pony riders
and any rider not showing over 2'6 at this show in Hunters/
Jumpers/Equitation. Juniors and Amateurs only. Same Horse/
Rider to be used throughout. 4 phase competition, scores
from all four phases will be added together to determine the
winners. Any ties for first place will work off. All scores will be
posted at completion of the competition.

Phase 1: Written Test. Pick up in the horse show office,
return to office by Noon on Saturday.

Phase 2: On the flat as a group; **Phase 3:** 1'3 Gymnastics;
Phase 4: Over Fences 2'3

Awards

Champion: \$1,000 Shopping Spree at the Tack Warehouse
Reserve Champion: \$500 Shopping Spree to Tack Warehouse
Champion, Reserve, 3rd Place each win a free stall at the
Brookside Finale, 4th and 5th place each win a free stall at Ride
and Swim, 6th and 7th each win a free stall at Pumpkin Party,
8th place wins a free stall at the Halloween Championship.
PRIZES ARE NOT REDEEMABLE FOR CASH.

\$2,000 Lori Clark 2' Hunter Derby

JUNIORS AND AMATEURS ONLY

Class 402. Entry Fee: \$75

Open to all horses and ponies that have been entered and
shown in at least one class at this show. Not to have shown
over 2'6 at this show in Hunters/Jumpers/Equitation. Two
round competition, all riders show in the first round, top 12
return for the second round. Second round will have two
option fences. Order of go first round computer drawn. Order
of go second round low score to high. Ribbons to 8th, prize
money to 8th. **NO HAUL INS ALLOWED**

\$5,000 Clean Living Flamingo Hunter Derby

sponsored by Brian Wallace

Class 401. Entry Fee: \$200

Two round competition at 3'.

Horses/ponies must have been entered and shown in two other classes at the Beach Party of 2023. A computer drawn order will be used for the first round. All entries will show in the first round – top 8 will return for the handy. There will be option fences at 3'3 offered in the handy round, and riders will earn one point for each option jumped successfully. There will be a special award given to the highest scoring junior and highest scoring amateur in the first round. Ribbons through 8th. 1st 30%, 2nd 22%, 3rd 15%, 4th 10%, 5th 7%, 6th 6%, 7th & 8th 5% **NO HAUL INS ALLOWED**

Hula Contest

Saturday night • No fee to enter

Everyone is invited so we can see who can shake it the best!



TACK WAREHOUSE

\$20,000 Sponsor
of Let's Show Events

including the
Trainer Equitation.

The finest & wildest variety of
merchandise for the horse &
rider, barn and home.

TACKWAREHOUSE.COM



Hunter Division

To be judged on performance and soundness. Manners will be emphasized and extreme speed penalized in Junior, Children's and Amateur classes. Hunter rings are 130' x 260' and 160' x 280' with sand/tennis shoe footing.

3' Green Hunters

Must jog for awards. Fences 3'.

1. Open Over Fences \$30
2. Open Over Fences \$30
3. Open Over Fences \$30
4. \$100 Open Over Fences Handy \$30
5. Open Under Saddle \$30

3'3 Green Hunters

Must jog for awards. Fences 3'3.

6. Over Fences \$30
7. Over Fences \$30
8. Over Fences \$30
9. \$100 Over Fences Handy \$30
10. Under Saddle \$30

3'6 Green Hunters

Open to horses in their first or second year of showing over fences 3/6 or higher in hunter or equitation classes. Horses must jog for soundness.

11. Open Over Fences \$30
12. Open Over Fences \$30
13. \$100 Open Over Fences \$30
14. \$100 Open Over Fences Handy \$30
15. Open Under Saddle \$30

3'3 Perf. Hunters

Must jog for awards. Fences 3'3.

21. Over Fences \$30
22. Over Fences \$30
23. \$100 Over Fences \$30
24. \$100 Over Fences Handy \$30
25. Under Saddle \$30

3'6 Perf. Hunters

Must jog for awards. Fences 3'6.

26. Over Fences \$30
27. Over Fences \$30
28. \$100 Over Fences \$30
29. \$100 Over Fences Handy \$30
30. Under Saddle \$30

3'9/4' Performance

Must jog for ribbons.

31. Over Fences \$30
32. Over Fences \$30
33. \$100 Over Fences \$30
34. \$100 Over Fences Handy \$30
35. Under Saddle \$30

3'3 Jr. Hunters

Open to junior riders. Riders may not cross enter into any class at 3/6 or higher in the Hunter Division, nor higher than 3/7 in the Equitation Division, nor higher than 1.10m in the Jumper Division at the same competition. Exception: Riders are permitted to compete in any Children's Jumper Class and/or Classic held at a maximum of 1.15m at the same competition. Horses entered in Jr. Hunters 3'3 may not be cross entered into Jr. Hunters 3'6 at the same competition.

36. Over Fences \$30
37. Over Fences \$30
38. \$100 Over Fences \$30
39. \$100 Over Fences Handy \$30
40. Under Saddle \$30

3'6 Jr. Hunters 17/U

Horses must be jogged for ribbons by a junior. Fences 3'6.

41. Over Fences \$30
42. Over Fences \$30
43. \$100 Over Fences \$30
44. \$100 Over Fences Handy \$30
45. Under Saddle \$30

3'3 A/O Hunters 18/O

Must jog for ribbons. Fences 3'3.

46. Over Fences \$30
47. Over Fences \$30
48. \$100 Over Fences \$30
49. \$100 Over Fences Handy \$30
50. Under Saddle \$30

3'6 A/O Hunters 18/O

Horses must jog for ribbons. Fences 3'6.

51. Open Over Fences \$30
52. Open Over Fences \$30
53. \$100 Over Fences \$30
54. \$100 Over Fences Handy \$30
55. Open Under Saddle \$30

Pony Working Hunters

All ponies must be in possession of a current measurement card which must be presented at the horse show office before number will be released. May cross enter Children's Pony Hunters. Small - not exceeding 12.2 - fences - 2'3 Medium - exceeding 12.2 but not exceeding 13.2 - fences - 2'6 Large - exceeding 13.2 but not exceeding 14.2 - fences - 2'9.

56. Over Fences \$30
57. Over Fences \$30
60. Under Saddle \$30

OUTREACH 2' Hunters

No oxers. Open to horses and ponies. Not to be jogged. No combinations

71. Open Over Fences \$30
72. Open Over Fences \$30
73. Open Over Fences \$30
74. Open Over Fences \$30
75. Open Under Saddle \$30

OUTREACH

2'3 Hunters

Open to horses and ponies. Not to be jogged. No combinations. May not cross enter in any division with fences over 3'0. Fences 2'3.

76. Open Over Fences \$30
77. Open Over Fences \$30
78. Open Over Fences \$30
79. Open Over Fences \$30
80. Open Under Saddle \$30

OUTREACH

2'6 Hunters

Open to horses and ponies. No cross entry restrictions. Not to be jogged. Fences 2'6.

81. Open Over Fences \$30
82. Open Over Fences \$30
83. Open Over Fences \$30
84. Open Over Fences \$30
85. Open Under Saddle \$30

Let's Show Halloween
Oct. 25-29 is a USHJA
Outreach Festival Event

OUTREACH

2'9 Hunters

Open to horses and ponies. No cross entry restrictions. Not to be jogged. Fences 2'9.

86. Open Over Fences \$30
87. Open Over Fences \$30
88. Open Over Fences \$30
89. Open Over Fences \$30
90. Open Under Saddle \$30

OUTREACH

3' Hunters

Open to horses and ponies. No cross entry restrictions. Not to be jogged. Fences 3'.

91. Open Over Fences \$30
92. Open Over Fences \$30
93. Open Over Fences \$30
94. Open Over Fences \$30
95. Open Under Saddle \$30

Hula Contest

Saturday night • No fee to enter



Everyone is invited so we can see who can shake it the best!

Hunter Division

To be judged on performance and soundness. Manners will be emphasized and extreme speed penalized in Junior, Children's and Amateur classes. Hunter rings are 130' x 260' and 160' x 280' with sand/tennis shoe footing.

ALL CLASSES ON THIS PAGE ARE OUTREACH APPROVED

OUTREACH Children's Hunters 17/U

Fences 3'. Not to be jogged. Division will be divided if entries warrant. Open to horses and ponies. No cross entry into Junior Hunter. Riders may not cross enter into any class with fences 3'6" or higher except Children's Jumpers and Medal classes.

96. Over Fences	\$30
97. Over Fences	\$30
98. \$100 Over Fences	\$30
99. \$100 Over Fences	\$30
100. Under Saddle	\$30

OUTREACH AA Hunters 18/O

Fences 3'. Not to be jogged. Division will be split if entries warrant. Horse or rider may not cross enter into any Amateur Owner Hunter class at this show. Riders may not cross enter into any class with fences 3'6" or higher that offers prize money.

101. Over Fences	\$30
102. Over Fences	\$30
103. \$100 Over Fences	\$30
104. \$100 Over Fences	\$30
105. Under Saddle	\$30

Child Pony Hunters

Open to ponies 14.2 hands/under. Ponies must be in possession of a current measurement card. May cross enter Pony Working Hunters. Riders not to enter classes where fences exceed 3'3" except Children's Jumpers) Not to be jogged. Fences 5m/Med - 2' Large - 2'6".

106. Over Fences	\$30
107. Over Fences	\$30
108. Over Fences	\$30
109. Over Fences	\$30
110. Under Saddle	\$30

Low Child Hunters

Open to horses & ponies. Not to jog. Not to be showing over 2'9". Fences 2'6".

111. Over Fences	\$30
112. \$100 Over Fences	\$30
113. \$100 Over Fences	\$30
114. Over Fences	\$30
115. Under Saddle	\$30

Low A/A Hunters

Open to horses & ponies. Not to jog. Not to be showing over 2'9". Fences 2'6".

116. \$100 Over Fences	\$30
117. \$100 Over Fences	\$30
118. \$100 Over Fences	\$30
119. \$100 Over Fences	\$30
120. Under Saddle	\$30

Mod. Child/AA Hunters

Open to horses & ponies. No cross entry restrictions. Not to jog. Fences 2'9".

126. \$100 Over Fences	\$30
127. \$100 Over Fences	\$30
128. \$100 Over Fences	\$30
129. \$100 Over Fences	\$30
130. Under Saddle	\$30

Warm-Up Hunters

All warm-up classes have 900 series numbers. See schedule for exact class numbers and fence heights. Entry Fee \$30 per class

**ALL RATED
DIVISIONS
MUST TROT A
CIRCLE AFTER
THEIR LAST
FENCE**

If any short stirrup or mini stirrup flat class has more than 12 entries, it must be split and pinned separately. If over fence classes have more than 12 riders, they must be double pinned.

Short Stirrup Ponies Only

Riders 17/U Not to be jogged. Fences 2'0".

136. Hunter Over Fences	\$30
137. Hunter Over Fences	\$30
138. Hunter Under Saddle	\$30
139. Equitation Over Fences	\$30
140. Equitation on the Flat	\$30

Short Stirrup 11/U

Fences 2'. Not to be jogged. Rider not to enter classes with fences over 2'6".

141. Hunter Over Fences	\$30
142. Hunter Over Fences	\$30
143. Hunter Under Saddle	\$30
144. Equitation Over Fences	\$30
145. Equitation on the Flat	\$30

Medium Stirrup 12 to 17

Fences 2'. Not to be jogged. Rider not to enter classes with fences over 2'6".

146. Hunter Over Fences	\$30
147. Hunter Over Fences	\$30
148. Hunter Under Saddle	\$30
149. Equitation Over Fences	\$30
150. Equitation on the Flat	\$30

Long Stirrup 18/O

Fences 2'. Not to be jogged. Rider not to enter classes with fences over 2'9".

151. Hunter Over Fences	\$30
152. Hunter Over Fences	\$30
153. Hunter Under Saddle	\$30
154. Equitation Over Fences	\$30
155. Equitation on the Flat	\$30

SAHJA Mini Stirrup

Open to all Jr/Am riders who have never shown 2' or above (short, med., long stirrup). To be shown over a cross rail course of 18". Trotting allowed. Rider does not have to be a SAHJA member to enter.

156. Hunter Over Fences	\$30
157. Hunter Over Fences	\$30
158. Hunter U/S, W/T/C	\$30
159. Eq. Over Fences	\$30
160. Eq. Flat W/T/C	\$30

Cross Rail Division

162. Cross Rail Hunter 18"	\$30
163. Cross Rail Hunter 18"	\$30
164. Cross Rail Hunter U/S	\$30
165. Cross Rail EQ 18"	\$30
166. Cross Rail EQ 18"	\$30
167. Cross Rail EQ Flat	\$30

Hunter Division

To be judged on performance and soundness. Manners will be emphasized and extreme speed penalized in Junior, Children's and Amateur classes. Hunter rings are 130' x 260' and 160' x 280' with sand/tennis shoe footing.

Walk Trot

May not enter classes that canter. \$25/class
ALL CLASSES OUTREACH APPROVED

SATURDAY CLASSES

- 181. Walk-Trot EQ Flat – 8/U
- 182. Walk-Trot Pleasure – 8/U
- 183. Walk-Trot Obedience – 8/U
- 184. Walk Trot Equitation, Open
- 185. Walk Trot Pleasure, Open
- 186. Walk Trot Obedience, Open
- 187. Walk Trot Hunter Hack, open
To show at a walk and trot both directions of the arena and then line up and individually trot a line of two poles on the ground. May also be asked to halt and back.
- 188. Walk-Trot Poles on Ground Hunter, Open
- 189. Walk-Trot Poles on Ground Equitation, Open

SUNDAY CLASSES

- 191. Walk-Trot EQ – 8/U
- 192. Walk-Trot Pleasure – 8/U
- 193. Walk-Trot Obedience – 8/U
- 194. Walk Trot Equitation, Open
- 195. Walk Trot Pleasure, Open
- 196. Walk Trot Obedience, Open
- 197. Walk Trot Hunter Hack, open
To show at a walk and trot both directions of the arena and then line up and individually trot a line of two poles on the ground. May also be asked to halt and back.
- 198. Walk-Trot Poles on Ground Hunter, Open
- 199. Walk-Trot Poles on Ground Equitation, Open

Green Pony Hunters

- 61. Green Pony Hunters 2'3/2'6/2'9 \$30
- 62. Green Pony Hunters 2'3/2'6/2'9 \$30
- 65. Green Pony Hunters U/S \$30

English Pleasure Hunter Seat

To be judged at the walk, trot and canter both directions of the arena. Manners and suitability as a pleasure mount are paramount. Transitions from one gait to another should be smooth and effortless. Horses must be obedient with prompt transitions. Horses must stand quietly and back readily in the line-up. All points earned in open pleasure classes at Brookside and at the Halloween show will count towards the Lorraine Smith Series Award of \$500. Points given to 10, 8, 6, 4, 2, 1.

- 171. Junior Pleasure – 17/U \$30
- 172. Senior Pleasure – 18/O \$30
- 173. Mare Pleasure \$30
- 174. Stallion-Gelding Pleasure \$30
- 175. Pleasure, Grey/White Horses only \$30
- 176. Pleasure, Non-Grey/White Horses only \$30
- 177. Pony Pleasure \$30
- 178. Open Pleasure \$30
- 179. \$500 Open Pleasure Championship \$30

Entries must have been entered and shown in two other pleasure classes at the Beach Party.



Muriel B Gill JR/AM Jumper Series

Riders, earn points toward a year-end award for the highest scoring .85m Muriel B Gill JR/AM Jumper Series Championship to be held at all Brookside shows.

Andrea Barbee Series

Earn points for a year end \$500 bonus in the Andrea Barbee series of .80m, .85m, .90m Jumper classes at all Brookside Shows.

Equitation Division

To be judged on hands, seat and general horsemanship.

Medal Classes

Please see Class Specifications for eligibility requirements and class conduct.
All Medals are 2023 qualifiers.

270. Almaden Jr/Am 2'9	\$30
269. JRW 3'3	\$30
260. PCHA 14/U 3'3	\$30
261. PCHA 18-34 3'3	\$30
262. PCHA 35/O 3'3	\$30
264. Madden XRail Medal 18"	\$30
271. Cloverleaf EQ Classic 3'	\$30
272. Horse & Hound Jr/Am 3'	\$30
273. Horse & Hound Pony 2'3/2'6	\$30
274. SAHJA Pony 2'3	\$30
275. SAHJA Mini 2'6	\$30
276. SAHJA Child/Adult 3'	\$30
257. CPHA Foundation Equitation 3'3	\$30
259. Onondarka Medal 12/U 3'	\$30
255. CPHA Jr Medal 3'6	\$30
256. CPHA Medal Amateur 3'6	\$30
258. CPHA Horsemanship 2'6	\$30
265. Foxfield Medal 18/O 3'3	\$30

Equitation Classes

FLAT

201. 11/U	\$30
205. 12-14	\$30
209. 15-17	\$30
213. Amateur 18/O	\$30
217. Novice, any age	\$30
221. Maiden, any age	\$30
225. Pony - 17/U	\$30

OVER FENCES

202/203. 11/U 2'9	\$30
206/207. 12-14 3'	\$30
210/211. 15-17 3'	\$30
214/215. Amateur 18/O 3'	\$30
218/219. Novice any age 2'6	\$30
222/223. Maiden, any age 2'3	\$30
226/227. Pony 2'3, 2'6, 2'9	\$30

Champions of Flamingo and Palm Tree Classics will each win a \$500 Gift Certificate to Tack Warehouse. Res. Champions will each win a \$250 Gift Certificate to Tack Warehouse.

2'3 Flamingo Equitation Classic

Open only to riders not showing over 2'6 at this show. **Entry Fee \$75**

406. Flat 407. Over Fences 2'3 408. Test

Ken Cohen 2'9 Palm Tree Equitation Classic

Open only to riders not showing over 3'3 at this show.

409. Flat 410. Over Fences 2'9 411. Test

No cross entry between these two divisions.

The Classics are three phase competitions including one over fence classes, one EQ on the flat and one individual test. Tests to be devised by the judges. Scores from each phase will be added together to determine the placings. Riders tied for any of the placings will perform an additional work off. Riders in the flamingo EQ must wear something with a flamingo on it. Rider in the palm tree EQ must wear something with a palm tree on it. Failure to do so will result in no score, no exceptions. Overall awards to 10th place with a special award to the rider wearing the best flamingo or palm tree. All scores will be posted at completion of the competition **Entry fee \$75**.

\$.2,000 Tack Warehouse Palm Tree Trainer Equitation

This competition will require one trainer and either one junior or amateur rider. The 2 riders will work as a pair in all three phases of the competition. Both riders must wear a palm tree of some sort on either themselves or their horse. It is a 3 phase competition with a score given for each phase, then added together to determine the placings. If there is a tied score, for the win, those pairs will perform an additional work-off. The first phase will be as a pair on the flat. The second phase over fences at 2'6 as a pair. Third phase a test devised by the judges, also as a pair. Ribbons and prize money to 8th place. Money divided as follows: 30%, 22%, 15%, 10%, 7%, 6%, 5%, 5% **Entry Fee: \$100 per pair**.

412. Flat 413. Over Fences 414. Test



Pink Friday

In honor of the national horse show bird, the Flamingo. Prizes will be awarded for the best representation of pink on either riders, horses or barns

Show your pink!

Jumper Division

In all Jumper classes, ties involving 1st place will jump off. Ties not involving 1st place will be broken by the fastest time in the first round. Jumping orders will be drawn and posted in accordance with PCHA rules. Jumper ring is 200' x 400' sand footing. For purpose of clarification, each jumper division has been assigned a specific height level. Within each level, at least 5% of the jumps will be set at the maximum height specified.

Argentine Jumpers: Speed portion of course wheeled at 382 yds/min to establish optimum time. Winning entry is the round with the least amount of faults, closest to the optimum time either over or under that time. Time faults are not assessed.

Jumper Heights

.70 meters	Fences 2'3 in height
.75 meters	Fences 2'5 in height
.80 meters	Fences 2'7 in height
.85 meters	Fences 2'9 in height
.90 meters	Fences 2'11 in height
.95 meters	Fences 3'1 in height
1.00 meters	Fences 3'3 in height
1.05 meters	Fences 3'5 in height
1.10 meters	Fences 3'7 in height
1.15 meters	Fences 3'9 in height
1.20 meters	Fences 3'11 in height
1.25 meters	Fences 4'1 in height

.65 Low Open Jumpers

Fences 2'0.

370.	Table 2.2b Arg
371.	Table 2.2c Arg
372.	Table 2.2d Arg
373.	Table 2.2,1
374.	\$100 Table 2.2c

.70 Low Open Jumpers

Fences 2'3.

301.	Table 2.2b	\$40
302.	Table 2.2c	\$40
303.	Table 2.2d	\$40
304.	Table 2.2,1	\$40
305.	Table 2.2c	\$40

.75m Jumpers

Fences 2'5.

308.	Table 2.2b	\$40
309.	Table 2.2c	\$40
310.	Table 2.2d	\$40
311.	Table 2.1	\$40
312.	\$300 Table 2.2c	\$75

.80m Jumpers

Fences 2'7.

316.	Table 2.2b	\$40
317.	Table 2.2c	\$40
318.	Table 2.2d	\$40
319.	\$100 Table 2,2,1	\$40
320.	\$100 Table 2.2c	\$40

.85m Muriel B. Gill Jr/ Am Open Jumpers

Junior and Amateurs will be given points separate from the Show Championship points even if they do not place. Fences 2'9.

324.	Table 2.2b	\$40
325.	Table 2.2c	\$40
326.	\$100 Table 2.2d	\$40
327.	\$100 Table 2,2,1	\$40
328.	\$100 Table 2.2c	\$40

.90m Jumpers

Fences 2'11.

332.	Table 2.2b	\$40
333.	Table 2.2c	\$40
334.	\$100 Table 2.2d	\$40
335.	\$100 Table 2,2,1	\$40
336.	\$100 Table 2.2c	\$40

.95m Jumpers

Fences 3'1.

340.	Table 2.2b	\$40
341.	Table 2.2c	\$40
342.	\$100 Table 2.2d	\$40
343.	\$100 Table 2.1	\$40
344.	\$100 Table 2.2c	\$40

1.00m Low Childrens

Fences 3'3.

375.	Table 2.2b	\$40
376.	Table 2.2c	\$40
377.	Table 2.2d	\$40
378.	Table 2.1	\$40
379.	\$300 Table 2.2c	\$75

1.00m Low Adults

Fences 3'3.

380.	Table 2.2b	\$40
381.	Table 2.2c	\$40
382.	Table 2.2d	\$40
383.	Table 2.1	\$40
384.	\$300 Table 2.2c	\$75

\$1,000 Jessica Forsyth .80 Open Jumper Special

Must have competed in two other jumper classes at this show. Fences .80M.

418.	Table 2.2b	\$75
------	------------	------

1.00m Open Jumpers

Fences 3'3.

345.	Table 2.2b	\$40
346.	Table 2.2c	\$40
347.	Table 2.2d	\$40
348.	Table 2.1	\$40
349.	\$300 Table 2.2c	\$75

1.05m Open Jumpers

Fences 3'5.

350.	Table 2.2b	\$40
351.	Table 2.2c	\$40
352.	Table 2.2d	\$40
353.	Table 2.1	\$40
354.	\$300 Table 2.2c	\$75

1.10m Childrens Jumpers

Fences 3'7.

385.	Table 2.2b	\$40
386.	Table 2.2c	\$40
387.	Table 2.2d	\$40
388.	Table 2.1	\$40
389.	\$300 Table 2.2c	\$75

1.10m Adult Amateur Jumpers

Fences 3'7.

390.	Table 2.2b	\$40
391.	Table 2.2c	\$40
392.	Table 2.2d	\$40
393.	Table 2.1	\$40
394.	\$300 Table 2.2c	\$75

1.10m Open Jumpers

Fences 3'7.

355.	Table 2.2b	\$40
356.	Table 2.2c	\$40
357.	Table 2.2d	\$40
358.	Table 2.1	\$40
359.	\$300 Table 2.2c	\$75

1.15m Open Jumpers

Fences 3'9

360.	Table 2.2b	\$40
361.	Table 2.2c	\$40
362.	Table 2.2d	\$40
363.	Table 2.1	\$40
364.	\$300 Table 2.2c	\$75

1.20m Open Jumpers

Fences 3'11.

365.	Table 2.2b	\$40
366.	Table 2.2c	\$40
367.	Table 2.2d	\$40
368.	Table 2.1	\$40
369.	\$300 Table 2.2c	\$75

1.20m Mod. Jr/Am

Fences 3'11.

395.	Table 2.2b	\$40
396.	Table 2.2c	\$40
397.	Table 2.2d	\$40
398.	Table 2.1	\$40
399.	\$300 Table 2.2c	\$75



Special Jumpers

\$2,000 1.00m Riverbend Equestrian Palm Tree Jumper Classic

Fences 3'1 – Open

The Palm Tree Jumper Classic is a two phase competition including two rounds of jumpers scored under Table 2.2.1. Scores from both classes will be added together and the rider with the least amount of faults in the fastest time will be the winner. Riders must wear clothing or jewelry with a palm tree visible or they will be eliminated. Ribbons to 8th. Entry fee: \$100 (includes both phases). Prize money 30%, 22%, 15%, 10%, 7%, 6%, 5%, 5%

415. Table 2.2.1 – Phase 1

416. Table 2.2.1 – Phase 2

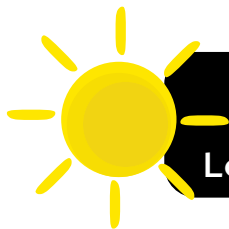
\$1,000 Brookside Cup Jumper Relay

The Brookside Cup is a Jumper Relay Competition consisting of teams of three horses/ponies competing at 0.75m, 0.80m and .85m. Teams must be declared in the show office by 5pm Saturday, June 10. Horses/Ponies may only compete on one team but riders may compete on a maximum of 2 teams. The course will consist of 15 jumps, equally divided by the three heights. The competition will begin with the rider of the horse/pony riding at the 0.75m height, they will jump their jumps and hand the baton to the rider who is jumping the 0.85m height, this rider will jump their jumps and then hand the baton to the rider jumping 1.0m. If the baton is dropped in passing, either rider may dismount and pick it up and continue, the penalty here is the time taken. Refusals are penalized by time taken and a TEAM is allowed a total of 3 refusals, before being eliminated. The first rider goes through the start line, the last rider goes through the finish line. The winner is the team with the best time and the least amount of faults. The Champion team will have their name engraved on the Brookside Cup and it will remain on display at Brookside Equestrian Park. Riders will receive token trophies to keep. Ribbons will be given to 8th place. All riders receiving awards/ribbons will be required to ride for their ribbons and participate in the victory gallop. There will also be a costume competition and the teams are encouraged to wear team costumes. Members of the winning team of the costume competition will each receive an award.

Prize money paid to 6th place.

417. Entry Fee – \$75 per team.

SPECIAL EVENTS



Join us Thursday evening for a
Pizza party during the
Let's Show \$5,000 Flamingo Hunter Derby

Join us Saturday Evening for a Brookside Dinner during the
\$2,000 Lori Clark 2' Derby. **Class 402**



Hula Contest

Saturday night • No fee to enter

*Everyone is invited
so we can see who
can shake it the
best!*

Sunday morning before the
Brookside Cup join us for the
Running of the Flamingos.

*All Runners must look like a
flamingo and be able to dance.*



Sunday Morning Breakfast during the
\$1,000 Brookside Cup Jumper Relay



BEACH PARTY EVENTS:

Barn Decorating Contest

Pink Day Friday

Prizes to best attire or decorations

Saturday & Sunday are
Hawaiian Shirt Weekend

*Shirts must have SLEEVES and COLLARS.
Allowed in all classes. Prizes for best
Hawaiian shirts.*



Let's Show Tentative Schedule

WEDNESDAY - JUNE 7

Jumper Ring - 8am

370.	.65m 2.2b Arg	2'
301.	.70m Jumper II; 2b	2'3
308.	.75m Jumper II; 2b	2'5
316.	.80m Jumper II; 2b	2'7
324.	Muriel B. Gill .85m Jumper II; 2b	2'9
332.	.90m Jumper II; 2b	2'11
340.	.95m Jumper II; 2b	3'1
345.	1.00m Jumper II; 2b	3'3
375.	1.00m Low Children's Jumper II; 2b	3'3
380.	1.00m Low A/A Jumper II; 2b	3'3
350.	1.05m Jumper II; 2b	3'5
355.	1.10m Jumper II; 2b	3'7
385.	1.10m Children's Jumper II; 2b	3'7
390.	1.10m A/A Jumper II; 2b	3'7
360.	1.15m Jumper II; 2b	3'9
365.	1.20m Jumper II; 2b	3'11
395.	1.20m Modified Jr/Am Jumper II; 2b	3'11

Hunter Ring 1 - 8am

901.	3' Warm-Up Hunters	3'
91.	3' Outreach Hunters	3'
92.	3' Outreach Hunters	3'
512.	NSBA Hunters	3'
513.	NSBA Hunters	3'
1.	3' Green Hunters	3'
2.	3' Green Hunters	3'
95.	Outreach Hunters	U/S
5.	Green Hunters	U/S
514.	NSBA Hunters	U/S
902.	3'3 Warm-Up Hunters	
6.	3'3 Green Hunters	3'3
7.	3'3 Green Hunters	3'3
21.	3'3 Performance Hunters	3'3
22.	3'3 Performance Hunters	3'3
515.	NSBA Performance Hunters	3'3
516.	NSBA Performance Hunters	3'3
10.	Green Hunters	U/S
25.	Performance Hunters	U/S
517.	NSBA Performance Hunters	U/S
903.	3'6 Warm-Up Hunters	3'6
11.	3'6 Green Hunters	3'6
12.	3'6 Green Hunters	3'6
26.	3'6 Performance Hunters	3'6
27.	3'6 Performance Hunters	3'6
518.	NSBA Performance Hunters	3'6
519.	NSBA Performance Hunters	3'6
15.	Green Hunters	U/S
30.	3'6 Performance Hunters	U/S
520.	NSBA Performance Hunter	U/S
31.	3'9 High Performance Hunters	3'9
32.	3'9 High Performance Hunters	3'9
35.	3'9 High Performance Hunters	U/S

Hunter Ring 2 - 8am

904.	2' Warm-Up Hunters	2'
71.	2' Outreach Hunters	2'
72.	2' Outreach Hunters	2'
500.	NSBA Hunters	2'
501.	NSBA Hunters	2'
75.	2'0 Outreach Hunters	U/S
502.	NSBA 2' Hunters	U/S
76.	2'3 Outreach Hunters	2'3
77.	2'3 Outreach Hunters	2'3
503.	NSBA Hunters	2'3
504.	NSBA Hunters	2'3
80.	2'3 Outreach Hunters	U/S
505.	NSBA 2'3 Hunter	U/S
906.	2'6 Warm-Up Hunters	2'6
81.	2'6 Outreach Hunters	2'6
82.	2'6 Outreach Hunters	2'6
506.	NSBA Hunters	2'6
507.	NSBA Hunters	2'6
85.	2'6 Outreach Hunters	U/S
508.	NSBA 2'6 Hunters	U/S
907.	2'9 Warm-Up Hunters	2'9
86.	2'9 Outreach Hunters	2'9
87.	2'9 Outreach Hunters	2'9
509.	NSBA Hunter	2'9
510.	NSBA Hunter	2'9
90.	2'9 Outreach Hunters	U/S
511.	NSBA 2'9 Hunters	U/S

THURSDAY - JUNE 8

Jumper Ring - 8am

371.	.65m Jumper II; 2c Arg	2'
302.	.70m Jumper II; 2c	2'3
309.	.75m Jumper II; 2c	2'5
317.	.80m Jumper II; 2c	2'7
325.	Muriel B. Gill .85m Jumper II; 2c	2'9
333.	.90m Jumper II; 2c	2'11
341.	.95m Jumper II; 2c	3'1
346.	1.00m Jumper II; 2c	3'3
376.	1.00m Low Children's Jumper II; 2c	3'3
381.	1.00m Low A/A Jumper II; 2c	3'3
351.	1.05m Jumper II; 2c	3'5
356.	1.10m Jumper II; 2c	3'7
386.	1.10m Children's Jumper II; 2c	3'7
391.	1.10m A/A Jumper II; 2c	3'7
361.	1.15m Jumper II; 2c	3'9
366.	1.20m Jumper II; 2c	3'11
396.	1.20m Modified Jr/Am Jumper II; 2c	3'11

412.	\$2,000 Tack WH Palm Tree Trainer EQ, flat	
413.	\$2,000 Tack WH Palm Tree Trainer EQ	2'6

Hunter Ring 1 - 8am

911.	3' Warm-Up Hunters	3'
93.	3' Outreach Hunters	3'
94.	3' Outreach Hunters	3'
3.	3' Green Hunters	3'
4.	3' Green Hunters, Handy	3'
912.	3'3 Warm-Up Hunters	3'3
8.	3'3 Green Hunters	3'3
9.	3'3 Green Hunters, Handy	3'3
23.	3'3 Performance Hunters	3'3
24.	3'3 Performance Hunters, Handy	3'3
913.	3'6/3'9 Warm-Up Hunters	3'6/3'9
13.	3'6 Green Hunters	3'6
14.	3'6 Green Hunters, Handy	3'6
28.	3'6 Performance Hunters	3'6
29.	3'6 Performance Hunters, Handy	3'6
33.	3'9 High Performance Hunters	3'9
34.	3'9 High Performance Hunters, Handy	3'9

NOT BEFORE 3PM

914.	3'3 Equitation Warm-Up	3'3
269.	JRW JR/AM Medal (test in course)	3'3
257.	CPHA Foundation (test in course)	3'3
255.	CPHA Jr Medal, 3 work-off	3'6
256.	CPHA Amateur Medal, (3 work-off)	3'6

Hunter Ring 2 - 8am

915.	2' Warm-Up Hunters	2'
73.	2' Outreach Hunters	2'
74.	2' Outreach Hunters	2'
916.	2'3 Warm-Up Hunters	2'3
78.	2'3 Outreach Hunters	2'3
79.	2'3 Outreach Hunters	2'3
917.	2'6 Warm-Up Hunters	2'6
83.	2'6 Outreach Hunters	2'6
84.	2'6 Outreach Hunters	2'6
918.	2'9 Warm-Up Hunters	2'9
88.	2'9 Outreach Hunters	2'9
89.	2'9 Outreach Hunters	2'9

NOT BEFORE 3PM

201.	EQ Flat 11/U	
205.	EQ Flat 12-14	
209.	EQ Flat 15-17	
213.	EQ Flat 18/O	
589.	NSBA EQ 17/U, flat	
593.	NSBA EQ 18/O, flat	
919.	2'9/3' Warm-Up EQ	2'9/3'
202.	EQ O/F 11/U	2'9
203.	EQ O/F 11/U	2'9
206.	EQ O/F 12-14	3'
207.	EQ O/F 12-14	3'
210.	EQ O/F 15-17	3'
211.	EQ O/F 15-17	3'
214.	EQ O/F 18/O	3'
215.	EQ O/F 18/O	3'
587.	NSBA EQ 17/U	3'
588.	NSBA EQ 17/U	3'
591.	NSBA EQ 18/O	3'
592.	NSBA EQ 18/O	3'

FRIDAY - JUNE 9

Jumper Ring - 8am

372.	.65m Jumper II; 2d Arg	2'3
303.	.70m Jumper II, 2d	2'5
310.	.75m Jumper II, 2d	2'7
318.	.80m Jumper II, 2d	2'9
326.	Muriel B. Gill .85m Jumper II, 2d	2'11
334.	.90m Jumper II, 2d	3'1
342.	.95m Jumper II, 2d	3'3
347.	1.00m Jumper II, 2d	3'3
377.	1.00m Low Children's Jumper II, 2d	3'3
382.	1.00m Low A/A Jumper II, 2d	3'3
352.	1.05m Jumper II, 2d	3'5
357.	1.10m Jumper II, 2d	3'7
387.	1.10m Children's Jumper II, 2d	3'7
392.	1.10m A/A Jumper II, 2d	3'7
362.	1.15m Jumper II, 2d	3'9
367.	1.20m Jumper II, 2d	3'11
397.	1.20m Modified Jr/Am Jumper II, 2d	3'11

414.	\$2,000 Tack WH Palm Tree EQ (test)	
------	-------------------------------------	--

Hunter Ring 1 - 8:00am

921.	3'3 Warm-Up Hunters	3'3
36/37.	3'3 Jr Hunters	3'3
46/47.	3'3 A/O Hunters	3'3
524.	NSBA 3'3 A/O Hunters	3'3
525.	NSBA 3'3 A/O Hunters	3'3
533.	NSBA 3'3 Jr Hunters	3'3
534.	NSBA 3'3 Jr Hunters	3'3
40.	3'3 Jr Hunters	U/S
50.	3'3 A/O Hunters	U/S
526.	NSBA 3'3 A/O Hunters	U/S
535.	NSBA 3'3 Jr Hunter	U/S
260.	PCHA 14/U (test in course)	3'3
261.	PCHA Adult Horsemanship 18-34 (test in course)	3'3
262.	PCHA Adult Horsemanship 35/O (test in course)	3'3
265.	Foxfield Medal 18/O	3'3
922.	3'6 Warmup Hunters	3'6
41/42.	3'6 Jr Hunters	3'6
51/52.	3'6 A/O Hunters	3'6
527.	NSBA A/O Hunters	3'6
528.	NSBA A/O Hunters	3'6
536.	NSBA Jr Hunters	3'6
537.	NSBA Jr Hunters	3'6
45.	3'6 Jr Hunters	U/S
55.	3'6 A/O Hunters	U/S
529.	NSBA 3'6 A/O Hunters	U/S
538.	NSBA 3'6 Jr Hunters	U/S
923.	3' Warmup Hunters	3'
101.	3' A/A Hunters	3'
96.	3' Children's Hunters	3'
521.	NSBA A/A Hunters	3'
522.	NSBA A/A Hunters	3'
530.	NSBA Children's Hunters	3'
531.	NSBA Children's Hunters	3'
105.	A/A Hunters	U/S
100.	Children's Hunters	U/S
523.	NSBA A/A Hunters	U/S
532.	NSBA Children's Hunters	U/S
272.	Horse & Hound Jr/Am Medal (test in course)	3'
173.	English Pleasure - Mares	
174.	English Pleasure - Stallions/Geldings	

409.	Ken Cohen Palm Tree EQ Classic, Flat	
401.	\$5,000 Clean Living Flamingo Hunter Derby sponsored by Brian Wallace	3'

419.	Leadline (in between derby rounds)	
------	------------------------------------	--

Hunter Ring 2 - 8am

924.	2'6 Warm-Up Hunters	2'6
111.	2'6 Low Child Hunters	2'6
112.	2'6 Low Child Hunters	2'6
116.	2'6 Low A/A Hunters	2'6
117.	2'6 Low A/A Hunters	2'6
925.	2'9 Warm-Up Hunters	2'9
126.	Modified Child/AA Hunters	2'9
130.	Modified Child/AA Hunters	U/S
270.	Almaden Farms Jr/Am Medal (test in course)	2'9

403. Bitsy Shields EQ Challenge, Flat

Hunter Ring 3 - 10am

926.	2' Warm-Up Hunters	2'
136.	Short Stirrup Pony Hunters 17/U	2'
146.	Medium Stirrup Hunters 12-17	2'
141.	Short Stirrup Hunters 11/U	2'
151.	Long Stirrup Hunters 18/O	2'
542.	NSBA Short/Med/Long Stirrup Hunters	2'
138.	Short Stirrup Pony Hunters	U/S
143.	Short Stirrup Hunters 11/U	U/S
148.	Medium Stirrup Hunters 12-17	U/S
153.	Long Stirrup Hunters 18/O	U/S
544.	NSBA Short/Med/Long Stirrup Hunter	U/S
406.	Flamingo EQ Classic, Flat Phase	
927.	Child Pony Warm-Up Hunters	2/2'6
106.	Child Pony Hunters	2/2'6
107.	Child Pony Hunters	2/2'6
551.	NSBA Children's Pony Hunter	2/2'6
552.	NSBA Children's Pony Hunter	2/2'6
553.	NSBA Children's Pony Hunter	U/S



Let's Show Tentative Schedule

SATURDAY - JUNE 10

Jumper Ring - 8am

271.	Cloverleaf EQ (testing optional)	3'
373.	.65m Jumper 2.1	2'
304.	.70m Jumper 2.1	2'3"
311.	.75m Jumper 2.1	2'5"
319.	.80m Jumper 2.1	2'7"
327.	.85m Muriel B. Gill Jumper 2.1	2'9"
335.	.90m Jumper 2.1	2'11"
343.	.95m Jumper 2.1	3'

415.	Riverbend Palm Tree II; 1 (Phase 1 - score added to Phase 2)	3'1"
------	--	------

348.	1.00m Jumper 2.1	3'3"
378.	1.00m Low Children's Jumper 2.1	3'3"
383.	1.00 Low A/A Jumper 2.1	3'3"
353.	1.05m Jumper 2.1	3'5"
358.	1.10m Jumper 2.1	3'7"
388.	1.10m Children's Jumper 2.1	3'7"
393.	1.10m A/A Jumper 2.1	3'7"
363.	1.15m Jumper 2.1	3'9"
368.	1.20m Jumper 2.1	3'11"
398.	1.20m Mod. Jr/Am Jumper 2.1	3'11"

Hunter 1 - 8:00am

931.	Pony Warm-Up Hunters	2'3", 2'6", 2'9"
56.	Pony Hunters	
57.	Pony Hunters	
60.	Pony Hunters	U/S

410.	Ken Cohen Palm Tree EQ	2'9"
------	------------------------	------

932.	3'3 Warm-Up Hunters	3'3"
38.	3'3 Junior Hunters	3'3"
39.	3'3 Junior Hunters	3'3"
48.	3'3 A/O Hunters	3'3"
49.	3'3 A/O Hunters	3'3"
933.	3'6 Warm-Up Hunters	3'6"

43.	3'6 Jr Hunters	3'6"
44.	3'6 Jr Hunters	3'6"
53.	3'6 A/O Hunters	3'6"
54.	3'6 A/O Hunters	3'6"
934.	3' Warm-Up Hunters	3'
97.	3' Children's Hunters	3'
98.	3' Children's Hunters	3'
102.	3' A/A Hunters	3'
103.	3' A/A Hunters	3'
276.	3' SAHJA Child/Adult Medal, 4 for flat work-off	3'
127.	2'9 Modified Child/AA Hunters	2'9"
128.	2'9 Modified Child/AA Hunters	2'9"

402.	\$2,000 Lori Clark 2' Hunter Derby	2'
------	------------------------------------	----

Hunter 2 - 8:00am

404.	Bitsy Shields EQ Challenge, Gymnastics	
------	--	--

407.	Flamingo EQ Classic	2'3"
------	---------------------	------

408.	Flamingo EQ Classic (test)	
------	----------------------------	--

937.	Warm-Up EQ	2'3"
222.	Maiden EQ O/F	2'3"
223.	Maiden EQ O/F	2'3"
572.	NSBA Maiden EQ	2'3"
573.	NSBA Maiden EQ	2'3"
221.	Maiden EQ Flat	
574.	NSBA Maiden EQ Flat	
938.	Children's Pony Warm-Up Hunters	2'/2'6"
108.	Children's Pony Hunters	2'/2'6"
273.	Horse & Hound Pony Medal (test in course)	2'/2'6"
110.	Children's Pony Hunters	U/S
939.	Pony Warm-Up Hunters	2'3/2'6/2'9"
61.	Green Pony Hunters	2'3/2'6/2'9"
62.	Green Pony Hunters	2'3/2'6/2'9"
65.	Green Pony Hunters	U/S
941.	2' Warm-Up Hunters	2'

137.	Short Stirrup Pony Hunter	2'
142.	Short Stirrup Hunter 11/U	2'
147.	Medium Stirrup Hunters 12-17	2'
152.	Long Stirrup Hunters 18/O	2'
940.	18" Warm-Up Hunters	18"
156.	SAHJA Mini Stirrup Hunters 18"	18"
157.	SAHJA Mini Stirrup Hunters 18"	18"
158.	SAHJA Mini Stirrup W/T/C 18"	U/S

Hunter 3 - 8:00am

936.	2'6 Warm-Up EQ	2'6"
218.	2'6 Novice EQ O/F	2'6"
219.	2'6 Novice EQ O/F	2'6"
575.	NSBA Novice EQ	2'6"
576.	NSBA Novice EQ	2'6"
113.	2'6 Low Children's Hunters	2'6"
118.	2'6 Low A/A Hunters	2'6"
165.	Crossrail EQ	18"
166.	Crossrail EQ	18"
264.	Madden Crossrail Medal (testing optional)	18"
167.	Crossrail EQ, W/T/C, flat	
217.	Novice EQ Flat	
577.	NSBA Novice EQ Flat	
181.	Walk Trot EQ Flat 8/U	
182.	Walk Trot Pleasure 8/U	
183.	Walk Trot Obedience 8/U	
184.	Walk Trot EQ Flat All Ages	
185.	Walk Trot EQ Pleasure All Ages	
186.	Walk Trot Obedience All Ages	
187.	Walk Trot Hunter Hack All Ages	
188.	Walk Trot Poles Hunter	
189.	Walk Trot Poles EQ O/F	
177.	English Pleasure - Ponies	
171.	English Pleasure - Jr Rider 17/U	
172.	English Pleasure - Sr Rider 18/O	
178.	English Pleasure Open	



SUNDAY - JUNE 11

Jumper Ring - 8am

RUNNING OF THE FLAMINGOS

417.	\$1,000 Brookside Cup Jumper Relay .75m, .80m, .85m	
------	---	--

416.	.95m Riverbend Palm Tree Classic (Phase 2 - scored added from Phase 1)	3'1"
------	--	------

418.	\$1,000 Jessica Forsyth .80 Open Special II; 2.2b	2'7"
------	---	------

374.	.65m Jumper 2.2c	
305.	.70m Jumper 2.2c	2'3"
312.	.75m Jumper 2.2c	2'5"
320.	.80m Jumper 2.2c	2'7"
328.	.85m Muriel B. Gill Jumper 2.2c	2'9"
336.	.90m Jumper 2.2c	2'11"
344.	.95m Jumper 2.2c	2'11"
349.	1.00m Jumper 2.2c	3'
379.	1.00m Low Children's Jumper 2.2c	3'
384.	1.00m Low A/A Jumper 2.2c	3'
354.	1.05m Jumper 2.2c	3'5"
359.	1.10m Jumper 2.2c	3'5"
389.	1.10m Children's Jumper 2.2c	3'7"
394.	1.10m A/A Jumper 2.2c	3'7"
364.	1.15m Jumper 2.2c	3'9"
369.	1.20m Jumper 2.2c	3'11"
399.	1.20m Modified Jr/Am Jumper 2.2c	3'11"

Hunter Ring 1 - 8:00am

411.	Ken Cohen Palm Tree EQ Classic Final (test)	
------	---	--

954.	2'9 Warm-Up Hunters	2'9"
129.	2'9 Modified Child/Adult Hunters	2'9"
175.	English Pleasure - Grey/White Horses	
176.	English Pleasure - Non Grey/White Horses	
179.	\$500 English Pleasure Championship	
953.	3' Warm-Up Hunters	3'
99.	3' Children's Hunters	3'
104.	3' A/A Hunters	3'
259.	3' Onondarka 12/U Medal (test top 4)	3'

Hunter Ring 2 - 8:00am

115.	Low Children's Hunters	U/S
120.	Low AA Hunters	U/S
955.	2'6 Warm-Up Hunters	2'6"
114.	2'6 Low Children's Hunters	2'6"
119.	2'6 Low AA Hunters	2'6"
258.	2'6 CPHA Horsemanship (test in course)	2'6"
405.	Bitsy Shields EQ Challenge Final Phase	2'3"
275.	SAHJA Mini Medal (test in course)	2'6"
191.	Walk Trot EQ Flat 8/U	
192.	Walk Trot Pleasure 8/U	
193.	Walk Trot Obedience 8/U	
194.	Walk Trot EQ Flat All Ages	
195.	Walk Trot Pleasure All Ages	
196.	Walk Trot Obedience All Ages	
197.	Walk Trot Hunter Hack All Ages	
198.	Walk Trot Poles Hunter	
199.	Walk Trot Poles EQ Flat	

Hunter Ring 3 - 8:00am

274.	2'3 SAHJA Pony Medal (test in course)	2'3"
957.	Children's Pony Warm-Up	2'/2'6"
109.	Children's Pony Hunters	2'/2'6"
958.	Pony Warm-Up	2'3/2'6/2'9"
226.	Pony EQ O/F	2'3/2'6/2'9"
227.	Pony EQ O/F	2'3/2'6/2'9"
162.	Crossrail Hunter	18"
163.	Crossrail Hunter	18"
164.	Crossrail Hunter	U/S
225.	Pony EQ Flat	
155.	Long Stirrup EQ 18/O Flat	
150.	Medium Stirrup EQ 12-17 Flat	
145.	Short Stirrup EQ 11/U Flat	
140.	Short Stirrup Pony EQ Flat	
562.	NSBA Short/Med/Long Stirrup EQ Flat	
959.	2' Warm-Up	
154.	2' Long Stirrup EQ O/F 18/O	2'
149.	2' Medium Stirrup EQ O/F 12-17	2'
144.	2' Short Stirrup EQ O/F 11/U	2'
139.	2' Short Stirrup Pony EQ O/F	2'
560.	NSBA Short/Med/Long Stirrup EQ	
561.	NSBA Short/Med/Long Stirrup EQ	
956.	18" Warm-Up	
159.	SAHJA Mini Stirrup EQ 18"	2'
160.	SAHJA Mini Stirrup EQ Flat W/T/C	

Let's Show Beach Party

June 7-11, 2023

STALL RESERVATIONS REQUIRED

Mailing Address: Beach Party Brookside, 11120 Bradley Ranch Road, Elk Grove, CA 95624

Make checks payable to "Let's Show" Closing Date June 2, 2023

Horse / Pony Registered Name:		Reg#:			Measurement: JR Hunter/Pony			SMALL	MED	LARGE
[]		[]			[]			[]	[]	[]
Color:	Age:	Sex: G M S			Green Status: [] 1st [] 2nd					
OWNER NAME:		Address:			City:		State:		ZIP	
EMAIL:		PHONE:								
TRAINER NAME:		Address:			City:		State:		ZIP	
EMAIL:		PHONE:								
USHJA#:	Exp. Date:	PCHA#:	Exp. Date:	CPHA#:	Exp. Date:	SAHJA#	Exp.Date:			
[]	[]	[]	[]	[]	[]	[]	[]			
Rider #1: NAME:		Address:			City:		State:		ZIP:	
USHJA#:	Exp. Date:	PCHA#:	Exp. Date:	CPHA#:	Exp. Date:	SAHJA#	Exp.Date:	BIRTH DATE:		
[]	[]	[]	[]	[]	[]	[]	[]	[]		
Rider #2: NAME:		Address:			City:		State:		ZIP:	
USHJA#:	Exp. Date:	PCHA#:	Exp. Date:	CPHA#:	Exp. Date:	SAHJA#	Exp.Date:	BIRTH DATE:		
[]	[]	[]	[]	[]	[]	[]	[]	[]		
STABLE WITH TRAINER [] OR OTHER:										
PAYEE NAME:		Address:			City:		State:		ZIP:	
SSN or TAX ID for winnings:										
<p>I/We the undersigned assume full risk and responsibility and agree to indemnify and hold harmless the show venue (Brookside Equestrian Park or Murieta Equestrian Center) and Let's Show, Brookside Show Park, the owners / employees, agents and directors thereof, all and singular from and against any and all liability for injury, loss, costs or expenses or any claims thereof of whatever nature arising or to arise from or on account, or by reason of the entry or entries hereby made by or for myself, person(s) handling or riding my entry, my family, or guests.</p> <p>I/We hereby represent that entry/entries made on behalf of exhibitors under the age of 18, that I/We am one of the parents or a duly appointed legal guardian, and as such entitled to make this entry for or on behalf of such minor exhibitor(s).</p> <p><i>Signature or Parent or Guardian of Minor Exhibitor:</i></p>										
Signatures: Owner:		Trainer:			Rider #1:			Rider #2:		
[]		[]			[]			[]		

BROOKSIDE EQUESTRIAN PARK

FEED AND BEDDING



CALL AHEAD AND PLACE YOUR ORDER

FEED AND BEDDING
OFFICE HOURS
8AM – 4PM DAILY

FACILITY OFFICE
(916) 682-1403



Mallard Creek

"Bed with the Best"



SHELDON
FEED & SUPPLY
(916) 686-6400
8928 Grant Line Rd

SAHJA Pointed Classes

Low Hunters – Open

Classes 77, 78, 79
(division titled 2'6
OUTREACH Hunters)

Low Children's Hunters

Classes 112, 113, 114, 115

Low Adult Hunters

Classes 117, 118, 119, 120

Modified Hunters

Classes 92, 93, 94, 95
(division titled 3'
OUTREACH Hunters)

OUTREACH 2'3 Hunters

Classes 77, 78, 79, 80

Children's Hunters

Classes 97, 98, 99, 100

A/A Hunters

Classes 102, 103, 104, 105

Children's Pony Hunters

Classes 107, 108, 109, 110

Mini Stirrup

Classes 156, 157, 158, 159, 160

Short Stirrup

Classes 141, 142, 143

Medium/Long Stirrup

Classes 146, 147, 148, 151, 152, 153

Junior Equitation

Classes 201, 202, 203, 204, 205, 206,
207, 208, 209, 210, 211

Amateur Equitation

Classes 213, 214, 215

Walk-Trot – 8 & under

Classes 181, 182, 183 OR 191, 192, 193

Junior/Senior Pleasure

Classes 171, 172, 173, 174, 175, 176, 177,
178, 179

Child/Adult Jumpers

Classes 376, 377, 378, 379, 381, 382, 383,
384

Training Jumpers

Classes 346, 347, 348, 349

Kindergarten Jumpers

Classes 326, 327, 328, 329

Medal Class Specifications

ALMADEN FARMS JR/AM: To be shown over a minimum of 8 fences 2'9 in height, with two changes of lead after the first fence, and MAY include one combination which must include an oxer. Two or more tests will be incorporated in the original course. No work-off is required. Two contestants must complete the course. Points awarded 10, 6, 4, 2, 1, 1/2. 1st & 2nd place winners qualify for the finals.

CLOVERLEAF EQUITATION CLASSIC: Class is open to Junior & Amateur riders not showing in any classes over 3'7 in height. To be judged over a Jumper course of not less than 9 fences at 3' feet in height. To be judged on hands, seat, guidance & control of the horse on a Jumper type of ride. There will not be a time allowed; a tone will be used to signal the rider to start the course. Any Jumper type bit or equipment is allowed. Jumping penalties will be considered in accordance with USEF Equitation rules. Additional work-offs after the initial round will be at the Judge's discretion, and any number of riders may be asked to test. At least 2 riders must enter & show in the class. First & second place winners or riders with 6 points will be qualified for the finals.

CPHA CHILD/ADULT 3' MEDAL: This class is open to children and adult CPHA members who have never competed in a 3'3 medal final. In addition, any rider who has competed in any classes within the last 10 years with fences set at 3'6 is not eligible to compete in this class. Trainers and riders must be members of CPHA prior to competing in any qualifying class. The class will be held over a 3' course with a minimum of eight fences with at least two changes of direction and a combination. At least 2 (4 when available) riders shall work off using USEF tests 1, 2, 5, 6, 10, 13 and 16. A minimum of three riders must complete the course.

CPHA FOUNDATION 3'3: Open to junior and amateur riders who are current members of the CPHA, to be judged over an equitation type course of at least 8 fences 3'3 in height with at least 2 USEF tests (1, 2, 6, 10, 13, 15 or 16) included as part of the course. Trainers of riders in this class must be professional members of the CPHA. This class will be judged on the current standards of the USEF Hunter Seat Equitation. This class may be held in hunter or jumper rings; if held in the jumper ring a liverpool may be used.

CPHA JR/AM 3'6 MEDAL: To be shown over either a hunter or jumper equitation type course of fences 3'6 in height with at least two (2) changes of direction and at least (1) combination with a spread fence. A minimum of three (3) riders will be required to work off using (USEF Eq. Tests 1-16). Tack per USEF EQ 106.5.a.1.2.3. Trainers and riders must be members of CPHA prior to riding in class.

HORSE & HOUND JR/AM MEDAL: Open to Jr. & Amateur riders who have not competed in a 3'6 Medal Finals in the previous 3 years and who are not showing 3'6 or higher at this show. To be shown over a hunter or jumper course of 3' fences, with 2 tests included. 3 riders fill to fill for points. Points will be awarded 7-5-4-3-2-1. If only 4 finish the course points will be 5-3-2-1, and if only 3 finish points will be 4-2-1. No points if fewer than 3 riders complete the course. Classes with 15 or more entries will be pointed 10-8-7-6-5-4-3-2. 5 points qualifies for the Finals in October. The Horse & Hound Medal will be presented to the winner of a qualifying class with 5 or more entries. Previous winners of the Horse & Hound Jr/Amateur Medal Finals are no longer eligible to complete.

HORSE & HOUND PONY MEDAL: To be shown over a hunter course of fences (small/medium to jump 2', large to jump 2'6) with 2 tests included. Points & qualifying the same as Horse & Hound Jr/Amateur Medal. Riders may not show 3'6 or higher at this show. Previous winners of the Horse & Hound Pony Medal Finals are no longer eligible to compete.

JRW MEDAL JR/AM: To be shown over a course of hunter and jumper type fences approximately 3'3 in height with flat work incorporated into the course. No work off is required; but further testing is at the judge's discretion. (USEF tests 1 - 19) Points awarded to top eight riders; 8, 7, 6, 5, 4, 3, 2, 1. Riders will receive double points in classes with 15 or more riders. Six points required to qualify a rider for the Medal Finals. Winner may continue to compete throughout the year. Five riders must complete the course. Winner of the final to receive a Saddle.

ONONDARKA: For riders 12 years of age and under, current members of the PCHA who will not be older than 12 (USEF horse show age) when the Final is held. To be judged over a course of 3'0

fences. Combinations are permitted. Work off is required of at least 4 (if available) without a major fault. Tests 1 - 18. Major faults include trotting, loss of stirrup, loss of reins, refusal or a numerical score of less than 60. Only one rider per horse. Three riders must complete the course.

PCHA HORSEMANSHIP 14/U, 18-34, 35 & OVER:

This class is open to riders 14&u (horse show age) who are current PCHA members as well as their trainer. The class is to be held over a class of at least 8 fences which are not to exceed 3'3 in height. One combination and at least 2 changes of direction must be included in the course. Two (2) or more tests USEF 1-18 (see exceptions) will be part of the original course. Competitors will not be asked to mount, dismount or jump without stirrups. Riders will not be asked to change horses. Conventional equipment recommended. Unconventional equipment penalized at judge's discretion. Riders may qualify. Qualified riders may continue to compete in the qualifying classes until the Final. Three (3) riders must complete the course for the class to count. If there are less than three (3) entries in either PCHA Adult Horsemanship 35 & Over or PCHA Horsemanship 14 & Under, the classes may be combined. When these classes are combined, they must be run under Adult Horsemanship specs, i.e., USEF tests 1-18 will be part of the original course, except that a combined class, riders must not be asked to mount, dismount, jump without stirrups or change horses.

SAHJA MINI MEDAL: A Hunt Seat medal open to any junior or adult amateur rider who has not won a 3'6 rated medal class or any medal finals, except the SAHJA Pony Medal. Riders to be judged over a course of fences 2'6 in height, with at least two Federation tests (1-9) incorporated into the course. Jumper type equipment is not allowed. There is no work-off.

SAHJA CHILD/ADULT MEDAL: A Hunt Seat medal open to any junior or adult amateur rider who has not won a 3'6 rated medal finals. Riders to be judged over a course of fences 3'0 in height. Jumper type equipment is not allowed. At least the top four riders will return for a flat work-off.

SAHJA PONY MEDAL: A Hunt Seat medal open to junior riders showing ponies (14.2 hands and under). The SAHJA Pony Medal shall be judged over a course of fences 2'3 in height, with two Federation tests (1-9) incorporated into the course. Jumper type equipment is not allowed. Any additional work-off shall be at the judge's discretion.

MADDEN XRAIL MEDAL JR/AM: Course of 8 fences at 1'6 in height. Additional testing at the judge's discretion. Open only to riders not showing over 1'6 at this show. All riders earning a ribbon in this class qualify for the finals but may continue to show in qualifying classes until the finals. Winner of the Finals at the Fall Finale show will receive a golf cart.



NSBA Classes

ALL CLASSES \$30

A \$9.50 charge per horse must be added to each entry

Must be members of NSBA to ride in following NSBA Classes

**denotes flat classes*

500/501/502*	NSBA Hunters	2'0
503/504/505*	NSBA Hunters	2'3
506/507/508*	NSBA Hunters	2'6
509/510/511*	NSBA Hunters	2'9
512/513/514*	NSBA Hunters	3'0
515/516/517*	NSBA Performance Hunters	3'3
518/519/520*	NSBA Performance Hunters	3'6
521/522/523*	NSBA A/A Hunters 18/O	3'0
524/525/526*	NSBA A/O Hunters 18/O	3'3
527/528/529*	NSBA A/O Hunters 18/O	3'6
530/531/532*	NSBA Children's Hunters 17/U	3'0
533/534/535*	NSBA JR Hunters 17/U	3'3
536/537/538*	NSBA JR Hunters 17/U	3'6
542/543/544*	NSBA Short/Medium/Long Stirrup Hunters	2'0
551/552/553*	NSBA Children's Pony Hunters	Sm/Med 2'0, Lg 2'6

NSBA Equitation

560/561/562*	NSBA Short/Medium/Long Stirrup EQ	2'0
572/573/574*	NSBA Maiden EQ	2'3
575/576/577*	NSBA Novice EQ	2'6
587/588/589*	NSBA EQ 17/U	3'0
591/592/593*	NSBA EQ 18/O	3'0



Rules & General Information

- 1. ATTENTION EXHIBITORS:** All horse shows set forth in the Prize List will be held under the rules and governance of the sanctioning body of the PCHA, SAHJA, NSBA, CPHA and USHJA Outreach. All Brookside shows will be monitored by the California Drug System (CDA).
- 2. MANAGEMENT:** The Horse Show Management reserves the right to interpret all questions and conditions in regard to, or arising out of, or incident to the show without claims for damages or recourse of any kind. All questions not covered in these Rules and Regulations shall be decided by the horse show management; its decision to be final.
- 3. RESPONSIBILITY:** The Horse Show Management reserves the right to refuse, accept conditionally, or to cancel any entries, disqualify any riders or exhibitors, prohibit exhibition of entries, and cancel award prizes, without claim for damages; to change any course, to cancel or combine any un-filled classes, or to reschedule classes as competition warrants.
- 4. CONDITION OF ENTRY:** Every horse entered in competition will be under control of the Horse Show Management, but Management will, in no case, be responsible for any loss or damage that may occur and it shall be the condition of entry that each exhibitor shall hold the Horse Show, its directors and employees and Brookside Equestrian Park harmless for any loss or accident to his/her horse(s) or equipment which may occur from sickness, fire or otherwise. All owners and exhibitors will be held accountable for any damages incurred by them, their agents or employees, to the stalls, buildings and other properties on the show grounds and shall be billed accordingly.
- 5. STALL REQUEST:** Trainers will be responsible for payment of all stalls requested. An open check is required to hold stalls. Stalls reserved but not included with entries will be charged to the open check. A \$25 late charge will be assessed on all entry blanks postmarked after the close of entries.
- 6. SCHOOLING/RESERVATION FEE:** The schooling/registration fee will not be deducted from the entry fees.
- 7. ADD/SCRATCH POLICY:** We kindly request that all adds and scratches are completed in the office by 4pm each day. No gate adds on Sunday please.
- 8. SCHOOLING:** Schooling will be allowed in all arenas; Tuesday June 6th from approx 8:00 am to 6:00 pm. And at the end of each show day with time permitting.
- 9. ENTRY BLANKS:** Care should be taken to enter each horse in its proper division or class. Exhibitors are responsible for their errors and those of their agents in making out entry blanks. In all cases the description on the entry blank must fully identify the horse. The word "entry" shall not be accepted. A. Be properly signed, and in the case of a minor, be signed by a parent or guardian. B. Be made on an entry blank provided by the show. C. Show the correct mailing address of the owner. D. Social Security number must be included on entry blank.
- 10. REFUNDS:** All refund requests must be submitted in writing. Before closing date of entries, full refunds will be given. After closing date, with veterinarian or doctors certificate, refunds will be given less \$50 office charge, and less fees held prior to notification at the horse show office, whether exhibited in or not. Stall fees may be refunded if cancelled by May 26, 2023.
- 11. RETURNED CHECKS:** Checks returned by the bank for any reason are regarded as a most serious offense and will be handled in the following procedure. \$25 OR 10% OF THE AMOUNT OF THE CHECK WILL BE ASSESSED FOR EACH RETURNED CHECK!! Accounts will be given ten days to be paid in full with cash, or cash equivalent or they will be turned into USEF and PCHA for further disciplinary action.
- 12. PRIZES/PRIZE MONEY:** Awards to 1st place in all classes, ribbons 1st-8th in all classes. In money classes prize money will be paid through 6th place (30%, 22%, 15%, 12%, 11%, 10%) unless otherwise stated in class specs. Prize money will be payable to Payee listed on the entry blank and mailed within 30 days. No prize money will be paid unless owners Social Security number is listed on entry blank.
- 13. PARKING:** Horse trailers will be parked in designated areas. Autos will also be parked in designated areas. There will be no autos allowed in the barn area and aisles.
- 14. RVs:** Trailer parking spaces/onsite rentals must be booked directly through Brookside Show Park at 916-682-1403. 15 amp service.
- 15. GOLF CART, MOTORIZED SCOOTERS, ETC.:** Golf Carts rentals are available at Brookside and can be reserved through the facility office at 916-682-1403. Motorized Vehicles: May be used outside the buildings on designated paths. Minors who do not have a valid driver's license which allows them to operate a motorized vehicle in the state in which they reside will not be permitted to operate a motorized vehicle of any kind, including, but not limited to, golf carts, motorcycles, scooters, or farm utility vehicles, on the competition grounds of licensed competitions. Minors who have a valid temporary license may operate the above-described motorized vehicles as long as they are accompanied by an adult with a valid driver's

- license. The parent/legal guardian or individual who signs the entry blank as a parent or guardian of a minor operating a motorized vehicle in violation of this rule are solely responsible for any damages, claims, losses or actions resulting from that operation. Violations of this rule will be cause for penalties against those responsible for the child committing the offense. Wheelchairs and other mobility assistance devices for individuals with disabilities are exempt from this rule.
16. **STABLING:** Stalls and tack rooms will be available for \$350 each. No bedding included. Stalls are of portable construction. 10'x10' with doors. Stalls will not be available prior to 8am Tue, June 6th, unless specific arrangements are made with the Show Management.
 17. **FEED AND BEDDING:** All orders must be made through the facility office (916) 682-1403.
 18. **MEDICAL WASTE:** Needles must be placed in the proper receptacles. Anyone found in violation shall be subject to a fine or other penalties deemed necessary by show management.
 19. **POLING:** Not allowed in California.
 20. **DOGS:** Dogs are not permitted to be loose on competition grounds and must be held on a leash or otherwise restrained. Individuals must not lead dogs on a leash while mounted. Dog owners are solely responsible for any damages, claims, losses or actions resulting from their dogs' behaviors.
 21. **ARENAS:** Warm-up rings and all arenas are sand footing. Grand Prix arena 310'x240'. Main Hunter Ring 275'x150'. Hunter Ring II 240'x130'.
 22. **GROUND'S FEE:** Per day per horse not using a stall - \$50.00
 23. **NON SHOWING HORSES:** For any horse on the grounds and not officially entered, owner, or trainer of said horse must complete a "Not to Show" form, sign a release at the horse show office, and pay a \$50 fee.
 24. **SAFE SPORT:** Let's Show will comply with all requirements for amateur sport as set forth in the Ted Stevens Olympic and Amateur Sports Act and will refer all complaints to the United States Center for Safe Sport for independent investigation. Let's Show shall uphold standards equal to those set forth in the Equestrian NGB's Safe Sport Policy. Let's Show shall give full reciprocity to any sanctions imposed by the US Center for Safe Sport that are published on the Centralized Disciplinary Database.

**Madden Medal Finals and
Cloverleaf Medal Finals winners
receive a golf cart. Almaden
Medal Finals at Halloween also
earn a golf cart.**





Pacific Coast Horse Show Association
 P.O. Box 5570, Glendale, CA 91221
 (818) 842-8194

MEMBERSHIP APPLICATION

- NEW RENEWAL
- Senior: \$85.00 Junior/Western Junior: \$85.00 Life: \$1,000.00
- SPECIAL – Senior for 3 years: \$200.00 SPECIAL – Junior for 3 years: \$150.00*
*no increase if a junior becomes a senior during 3 year plan
- STEWARD SHOW MANAGER SHOW CONTACT

NAME _____

ADDRESS _____

CITY / STATE _____ ZIP _____

TELEPHONE _____ E-MAIL _____

DATE OF BIRTH REQUIRED _____

- Amateur Professional Hunter/Jumper Western

CREDIT CARD VISA _____ MC _____ # _____ Check# _____

NAME ON CARD _____

BILLING ADDRESS _____

EXPIRATION DATE _____ 3 DIGIT CODE _____

NAME OF TRAINER _____



Pacific Coast Horse Show Association
 P.O. Box 5570, Glendale, CA 91221
 (818) 842-8194

HORSE REGISTRATION

Horse must be registered to complete for Year End Awards

SHOW NAME OF HORSE _____

- Hunter/Jumper Western

Color _____ Sex _____ Ht. _____ Yr. Foaled _____ Breed _____

OWNER OF HORSE _____

(OWNER MUST BE PCHA MEMBER)

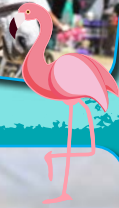
- YEARLY REGISTRATION: \$40.00 LIFETIME REGISTRATION: 100.00

SHOW NAME CHANGE: \$10.00

FORMER NAME _____

TRANSFER OF OWNERSHIP: \$10.00

FORMER OWNER _____



DONARWEISS GGF

De Niro / Hohenstein / Archipel



BOOK NOW

**Sire of
Dressage,
Hunter &
Jumper
Champions**

**Fresh & frozen
semen available
exclusively
through
Starr Vaughn
Equestrian**

Michele Vaughn | 916-869-7942 | svequestrian@icloud.com



Just B @ Brookside

Where friends are made for a lifetime

Let's Show Beach Party

June 7-11

USHJA OUTREACH, PCHA, SAHJA, CPHA
NSBA, SNHSA, OHJA RATED
featuring

- \$1,000 Brookside Jumper Relay
- The Running of the Flamingos
- \$2,000 Trainer Equitation
- \$2,000 3' Hunter Derby
- \$2,000 Lori Clark 2' Hunter Derby
- Palm Tree Equitation
- Flamingo Equitation
- Bitsy Shields Equitation Challenge

Let's Show Pumpkin Party

Sept 8-10

APPROVED BY
USHJA OUTREACH, CPHA, NSBA
SNHJA, OHJA, SAHJA

- featuring
- SAHJA Jumper Cup
 - Acorn Equitation
 - Rollison Ranch 3' Derby

Brookside Splash

June 15-18

APPROVED BY SAHJA, USHJA OUTREACH,
CPHA, SAHJA, NSBA, SNHSA, OHJA

- Father's Day Brunch, Leadline,
3 Phase Competition for Dads & Kids
Jumper Jackpot Class

Brookside Fall Finale

Oct 12-15

APPROVED BY PCHA,
USHJA OUTREACH, CPHA, NSBA
SNHJA, OHJA, SAHJA

- Cloverleaf Medal Finals
Finals Muriel B. Gill and
Andrea Barbee Jumper Series
Madden XRail Medal Finals
\$2,500 3' Derby
\$1,500 2' Derby
Champions of Cloverleaf and
Madden Medal Finals
each earn a golf cart



Ride & Swim

Aug 10-13

APPROVED BY USHJA OUTREACH,
CPHA, SAHJA, NSBA, SNHSA, OHJA
feature events

- Derbies, splash contest, golf cart decorating
Tallie English Equitation Special



Let's Show

3304 Shasta Dam Blvd., Spc. 37
Shasta City, CA 96019



**PCHA, SAHJA
Outreach USHJA,
NSBA, CPHA & SNHSA**

**Entries Close
June 2, 2023**

Enter online at
www.HorseShowTime.com