

# BROOKSIDE OPENING DAY



**April 26-28, 2024**

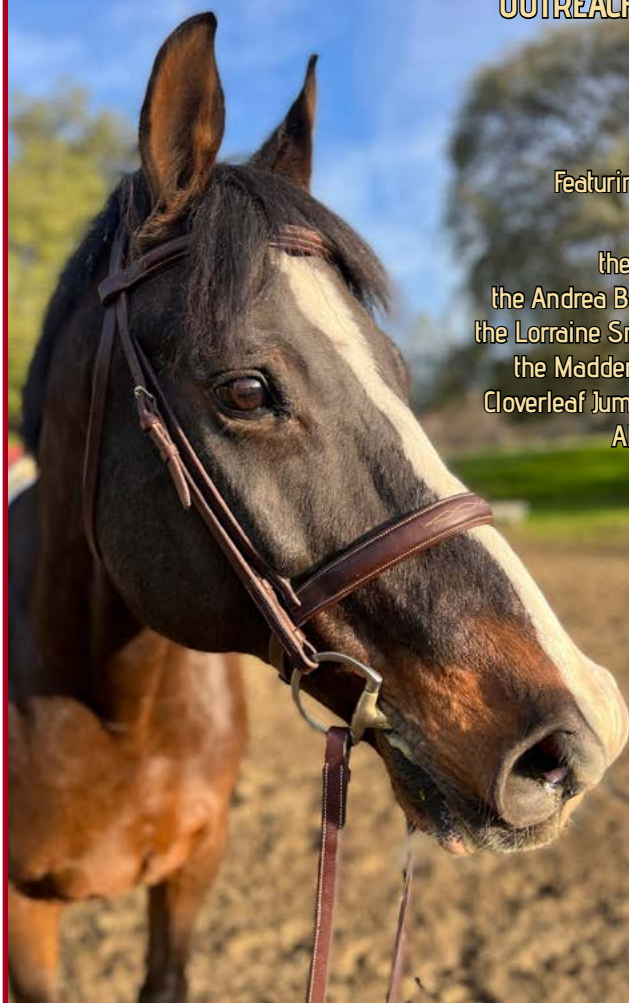
(Friday, Saturday & Sunday Only)

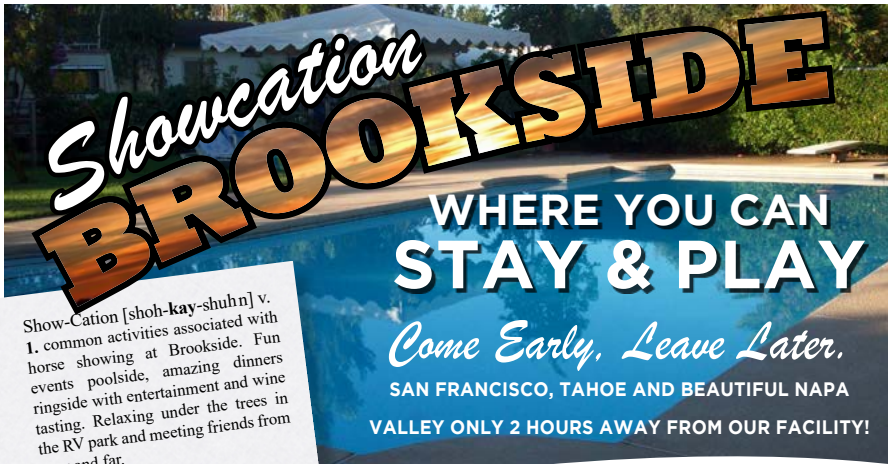
**APPROVED BY USHJA  
OUTREACH, PCHA, SNHSA  
CPHA, SAHJA**

**Brookside Series  
and Medal Finals**

Featuring the first qualifying  
classes for

the Muriel B Gill Series,  
the Andrea Barbee Jumper Series,  
the Lorraine Smith Pleasure Series,  
the Madden XRail Medal Finals  
Cloverleaf Jumper Challenge Finals  
Almaden Medal Finals





Show-Cation [shoh-kay-shuhn] v. 1. common activities associated with horse showing at Brookside. Fun events poolside, amazing dinners ringside with entertainment and wine tasting. Relaxing under the trees in the RV park and meeting friends from near and far.



(916) 635-4040



(916) 851-1550



(916) 478-9000



(916) 691-1900



SHELDON  
INN

(916) 686-8330



(916) 686-8543



916) 686-6622

*Call Brookside Show Park at  
916 682.1403 to setup your Showcation !*



- Reserve an RV to stay local and enjoy the evenings
- Reserve a golf cart for easy travel around the grounds
- Hookups for your own Living Quarters Trailer

## JUDGES

Lindsay Costigan (H/J/EQ)  
Heidi Kane (H/EQ)  
Cyndi Merritt (H/EQ)

## USEF STEWARD

Alice Calhoun

## COURSE DESIGNER

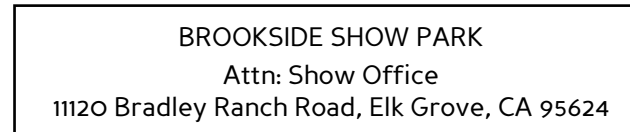
Mike Nielsen  
Eric Torres

## SHOW OFFICIALS

Bill Madden  
Brian Wallace  
Lorraine Smith (916-584-5407)  
Denise Wiemer  
Peggy Fackrell  
Terrell China  
Sheila Day  
Dr. Garfinkel (209-304-0519, on site)  
Matthew Lockie

Facility/Barn Manager  
Show Manager  
Show Secretary  
Assistant Show Secretary  
Announcer/Gates  
Announcer/Gates  
Announcer/Gates  
Veterinarian  
Farrier (Onsite Fri-Sun)

Entries may be done online at RingRadar.com or emailed to ls.showentries@gmail.com or mailed to



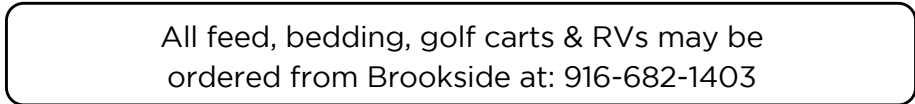
NEAREST HOSPITAL/TRAUMA CENTER:  
Kaiser South, 6600 Bruceville Rd., Sacramento 95823  
(11.8 miles from Brookside)

## PCHA, SAHJA, USHJA Outreach, SNHSA & CPHA

**Entries close April 12, 2024**

For further information call Brian at 818-912-0720 or Lorraine at 916-584-5407

For stall requests, email Lorraine at ls.showentries@gmail.com





## Lots of Ways to Win Year-End Awards!

### **PCHA (Pacific Coast Horse Shows Association)**

PCHA offers year-end awards for many divisions (see website for detailed list) plus year-end medal finals for 14/U, 18-34, 35/O and JR/AM 2'9 riders. They are our primary West Coast representative organization and they offer many benefits for their members. Check out their website at [pcha.org](http://pcha.org).

### **USHJA Outreach**

Membership is free, just fill out an Outreach membership form. Year-end awards are offered in the following divisions: Hunters 3'0 and under – including derbies, walk trot poles, x-rail, equitation walk trot, WTC, EQ 18in, x-rail, classes up to 3'0, jumpers to 1.20m, high point trainer awards for each zone.

### **SAHJA (Sacramento Area H/J Association)**

This local organization offers many benefits for a minimal fee. They offer 3 medal classes, pony, mini & child/adult with excellent year-end finals. Members may also earn year-end awards in many other divisions. Also, members have the opportunity to participate in clinics with top professionals and earn scholarship money for help with furthering their education. Check them out at [sahja.org](http://sahja.org).

### **CPHA**

The CPHA provides a forum voice, and many valuable programs and benefits for professionals working in California's large horse show industry. Through its many programs and benefits, the CPHA effectively reaches all professional members of California's horse show community. For more membership information, check [cpha.org](http://cpha.org)

## **MADDEN CROSS RAIL MEDAL**

Established in 2023 for the Jr/Am riders, in the name of William Bill" Madden, the owner of Brookside Equestrian Park for over 30 years. The Madden Cross Rail Medal is established to recognize and reward the performance of a junior / amateur rider who is starting, or returning to competition, and not competing over 1'9 from October finals to October finals. 3 riders must enter for the class to count as a qualifier.

Qualifying classes for the Medal Finals are offered throughout the show year at many shows, and any rider earning a ribbon (1st to 10th or 1st to 8th) at any show is qualified. EXCEPTION, one qualifier ribbon must be earned at a Brookside show (does not include the year end Fall Finale). There is no membership in any association required. Riders that have qualified and then show in 2ft height for any reason will be disqualified from

competing for the Cross Rail Finals. The finals class will be held at the Brookside Fall Finale in October. The finals will allow trotting and cantering on course and will be judged on a riders equitation over a course of cross rail fences of not less than 8 fences, at a height of 1'9, with at least (2) two additional equitation tests included in the course. An additional test will be required of the top 10 scoring riders after the first 2 rounds. The finals will be tallied and scored and the presentation of Champion, Reserve Champion and 3rd through 10th will be held. Riders are required to ride for the awards ceremony. Champion receives a Golf Cart and Reserve Champion receives a \$1000 Shopping Certificate. A rider who wins the Madden Medal Finals is no longer eligible to participate in any future finals. A perpetual plaque will be on display at Brookside Equestrian Park.

### **THOROUGHBRED INCENTIVE PROGRAM**

The following Brookside shows will offer TIP High Point awards, as well as points toward the Thoroughbred Sporthorse Challenge! Opening Day, Beach Party, Back to School and Fall Finale

Questions?

Contact Anne Greco, JC Thoroughbred Event Liaison, at [cedarhillfarmgv@gmail.com](mailto:cedarhillfarmgv@gmail.com)  
Ride a Thoroughbred? Provide T.I.P. Numbers with your entries.  
For more information and to see if your thoroughbred is eligible, visit [tjctip.com](http://tjctip.com)



### **EARN QUALIFYING POINTS FOR THE THOROUGHBRED SPORTHORSE CHALLENGE!**

The Thoroughbred Sporthorse Challenge is a year-end highpoint award to promote thoroughbreds in sporthorse disciplines (hunter, jumper and dressage).

No cost to participate. If you are registered with The Jockey Club's Thoroughbred Incentive Program (TIP) you are automatically enrolled.

Ribbons, prizes and award ceremony!



## MEDAL SPECIFICATIONS & SPECIAL CLASSES

**MURIEL B. GILL .85m JUMPER CLASS:** Jr/Am riders only in this class earn points toward year end Championship awards to be presented at Fall Finale.

**ANDREA BARBEE:** Riders in .80m, .85m and .90m classes earn points toward the Brookside Series award.

**ONONDARKA:** Riders 12/U must be current members of PCHA. Course of 3'0 fences, combinations permitted. Top 4 return for additional testing. Three riders must complete the course for class to count.

**HORSE & HOUND Jr/Am:** Open to riders not showing 3'6 or higher at this show. Course of fences 3'0 with 2 tests included. Three riders must complete for class to count.

**HORSE & HOUND PONY:** Sm/M 2' Lg 2'6 2 tests included. Points and rules same as Horse & Hound Jr/Am.

**JRW JUNIOR/AMATEUR:** To be shown over a course of Hunter/Jumper type fences approx. 3'3, with flat work incorporated into the course. NO work-off is required, but further testing is at the judge's discretion. Points awarded to the top 8 riders (8-7-6-5-4-3-2-1) points will be doubled in classes with 15 or more. Six points required to qualify a rider for Finals. Five riders must complete the course.

**PCHA 14/U, 18-34 & 35/O:** Riders must be PCHA members. Courses 3'3 include 2 tests. Three riders must complete the course for points to be earned. May be combined if entries warrant.

**CPHA HORSEMANSHIP MEDAL:** Open to CH/AA riders who have never won any over fence class with fences higher than 3'0 in the past 10 years. Class held over 2'6 course

no combinations. One test either halt or trot fence included. 3 must compete.

**CPHA CHILD/ADULT:** Riders may not have won any over fence class in past 10 years with fences over 3'3. Class held over a 3'0 course with a combination. Minimum of 2 riders shall work off. 3 must compete.

**ALMADEN FARMS JR/AM:** minimum 8 fences at 2'9, with test built into the course. 2 Must compete and 1st & 2nd place qualify for the finals. Points awarded 10, 8, 6, 4, 2, 1

**CPHA FOUNDATION EQ QUALIFYING CLASS JR/AM:** Riders & trainers must be members of CPHA. Course must have at least 8 fences at 3'3 with 2 tests included in the course.

**CPHA JR/AM HUNT SEAT MEDAL:** Course of at least 8 fences at 3'6. Minimum of 3 riders must work-off. Rider & trainer must be CPHA members.

**CLOVERLEAF JUMPER CHALLENGE:** open only to Jr/Am riders not showing in any jumper classes during this show year over 3'3" (1.0m). To be judged over a jumper course of not less than 9 fences at 2'7 (80m) in height. To be judged under the rules of any/all USEF jumper tables. Any jumper type bit or equipment is allowed except for draw reins. At least 2 riders must enter for the class to be a qualifier for the finals. All ribbon winners qualify for the finals. The Cloverleaf Challenge Finals will be held at Brookside during the Fall Finale show. The finals will consist of 2 rounds, held over 2 separate days. With a final jump-off of the top 10 from the first 2 rounds combined scores and/or all riders with combined clean round scores. Champion of the finals will earn a golf cart, res. Ch. \$1000 Shopping certificate, third through 10th will all

receive awards. Previous winners of the cloverleaf equitation finals are not eligible for the cloverleaf jumper challenge finals.

**SIERRA NEVADA HORSE SHOW ASSOC. MINI MEDAL:** 2'6 course for JR/AM riders/trainers members of SNHSA only. Two additional tests included in the course. 2 Entries required to hold the class.

**SIERRA NEVADA HORSE SHOW ASSOC JR/AM MEDAL:** Riders may not ride in any classes below 2'6 at same competition. Course set at 2'9 and additional testing required of the top 4 riders after the initial round. 2 Entries required to hold the class.

**EQUITATION RIDE-OFF:** All riders earning a ribbon in an equitation class at this show, either over fences or on the flat, all ages, invited to the ride-off. The ride-off will be on the flat. No entry fee.

**THE MADDEN CROSS RAIL MEDAL:** Riders in this medal may not be showing over 1'9 (XRail) during this show year. Open only to Jr/Am riders. Trotting and/or cantering on course allowed. To be judged on a rider's equitation over a course of cross rail fences of not less than 8 fences with at least two additional equitation tests included in the course. Any additional testing is at the judge's discretion. All riders earning a ribbon in the qualifying classes are qualified for the finals. At least 3 riders must enter the class for it to count as a qualifier. Also, in order to qualify for the finals, riders must have shown, and won a ribbon, in at least one qualifying class at a Brookside show, (not at Fall Finale) during the time from finals to finals. Finals will be held at the Brookside Fall Finale. The champion will earn a golf cart, reserve Champion a \$1000 shopping certificate. Once a rider has won a Madden Medal Finals they are no longer eligible for the Finals.

**CLASS #508 \$300 OPEN 80M SPEED DERBY:** A 2'7 course of jumps with 90M options built in. Jumping clean over a high option will give a rider 2 seconds off of their finishing time for each option jumped clean. Run under table 2,2.1. Entry fee \$30

**CLASS #506 SILKY'S 5 BAR JUMPER CONTEST:** 5 Obstacles are placed in a straight line with a distance of 36' between each obstacle. The jumps will be verticals of identical construction and type. If an obstacle is knocked down, the rider does not stop but must continue the course/line. If there is a run out or a refusal, the rider must resume the course at the obstacle the fault occurred at. They may re-approach the jump on an angle from outside of the line. Only riders without fault will be allowed to return for the second round and the jumps will be raised. The competition will end after the fourth round and all clean rounds will be awarded the blue ribbon. Entry fee \$30

**CLASS #500 BROOKSIDE PREMIER \$5000 3' Derby:** all derbies are 2 round competitions. The first round will be a regular hunt course, the second round will be a handy course. Top 10 scoring riders after the first round will return for the second round. All scores will be announced. Money paid to 8th place. Show Management reserves the right to modify the class specifications prior to the start of the class Entry fee \$150

**CLASS #501 2'0 DERBY, CLASS #502 2'6 DERBY:** \$300 Prize money for each of these two derbies. All derbies are 2 round competitions. The first round will be a regular hunt course, the second round will be a handy course. Top 10 scoring riders after the first round will return for the second round. All scores will be announced. Awards first through tenth. Money paid to 6th place. Show Management reserves the right to modify the class specifications prior to the start of the class. Entry fee \$30.

## HUNTER CLASSES

All classes in these divisions 3'0 and under are Outreach approved.

ALL STARRED CLASSES ARE U/S

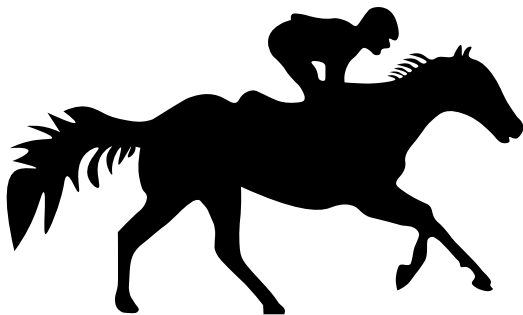
\*\*\*ALL CLASSES \$30\*\*\*

- |                           |   |                           |  |
|---------------------------|---|---------------------------|--|
| 1, 2, 3*                  | 2'0 Open Hunters                                  | 45 (\$50), 46 (\$50), 47* | 3'3 Jr Hunters, 17/U   |
| 5, 6, 7*                  | 2'3 Open Hunters                                  | 49 (\$50), 50 (\$50), 51* | 3'3 A/O Hunters, 18/O  |
| 9, 10, 11*                | 2'6 Open Hunters                                  | 53, 54, 55*               | 2'3 Beginning Ch/Ad Hunters  |
| 13, 14, 15*               | 2'9 Open Hunters                                  | 57, 58, 59*               | 2'6 Low Children's Hunters 17/U  |
| 17, 18, 19*               | 3'0 Open Hunters                                  | 61, 62, 63*               | 2'6 Low Adult Hunters 18/O   |
| 21(\$50), 22(\$50), 23*   | 3'0 Green Hunters<br>(not to have shown over 3'3) | 65, 66, 67*               | 2'9 Modified Ch/Ad Hunters   |
| 25(\$50), 26(\$50), 27*   | 3'3 Performance Hunters                           | 69, 70, 71*               | 3'0 Children's Hunters 17/U  |
| 29(\$50), 30(\$50), 31*   | 3'3 Green Hunters<br>(not to have shown over 3'3) | 73, 74, 75*               | 3'0 A/A Hunters 18/O   |
| 33 (\$50), 34 (\$50), 35* | 3'6 Open Performance Hunters                      | 77, 78, 79*               | 2'0 Maiden Hunters, rider or horse<br>(not to have won any blue ribbons o/f) |
| 37 (\$50), 38 (\$50), 39* | 3'6 Jr Hunters, 17/U                              | 81, 82, 83*               | 2'3 Novice Hunters, rider or horse<br>(not to have won 3 blue ribbons o/f)   |
| 41 (\$50), 42 (\$50), 43* | 3'6 A/O Hunters 18/O                              | 85, 86, 87*               | Children's Pony Hunters<br>Sm/Med 2'0, Lg 2'6                                |

### Short/Med/Long Stirrup – XRail – Mini Stirrup – Walk Trot Divisions\*\*

All Outreach approved. \*\*All classes \$30\*\*

- |              |                                  |  |                                     |
|--------------|----------------------------------|--|-------------------------------------|
| 89, 90, 91*  | 2'0 Short Stirrup Hunters 11/U   | 122,123,124*   | XRail Hunter, Open 1'3              |
| 93, 94, 95*  | 2'0 Short Stirrup EQ 11/U        | 125,126,127*   | XRail EQ Jr/Am 1'3                  |
| 96, 97, 98*  | 2'0 Med Stirrup Hunters 12-17    | 128, 129, 130*   | SAHJA Mini Stirrup XRail Hunter 1'3 |
| 100,101,102* | 2'0 Med Stirrup EQ 12-17         | 131,132,133*   | SAHJA Mini Stirrup XRail EQ 1'3     |
| 103,104,105* | 2'0 Long Stirrup Hunters 18/O    | 136, 137*  | Poles on the Ground Hunters         |
| 107,108,109* | 2'0 Long Stirrup EQ 18/O         | 138*   | Poles on the Ground U/S (W/T/C)     |
| 110, 111     | Walk Trot 8/U Pleasure           | 139, 140*  | Poles on the Ground EQ              |
| 113, 114     | Walk Trot 8/U EQ                 | 141*   | Poles on the Ground Flat EQ (W/T/C) |
| 116, 117     | Walk Trot Pleasure Jr/Am any age | <b>Riders in Poles on the Ground may not enter any other over fence classes except XRail</b> |                                     |
| 119, 120     | Walk Trot EQ Jr/Am any age       |  |                                     |



## HUNTER CLASSES

All classes in these divisions 3'0 and under are Outreach approved.

ALL STARRED CLASSES ARE U/S

\*\*\*ALL CLASSES \$30\*\*\*

### Equitation Division

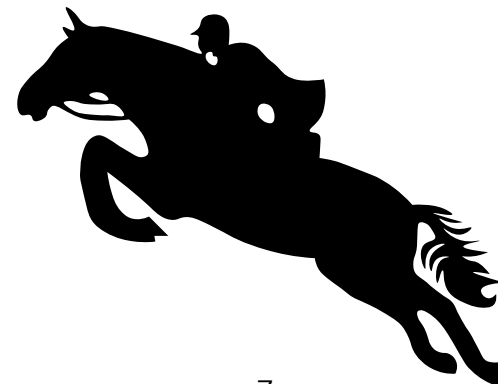
All classes \$30

- |              |  |
|--------------|--|
| 200,201,202* | EQ 17/U Outreach 3'0   |
| 203,204,205* | EQ 18/O Outreach 3'0   |
| 206,207,208* | Maiden EQ 2'<br>(not to have won any blue ribbons O/F)   |
| 209,210,211* | Novice EQ 2'3<br>(not to have won 3 blue ribbons O/F)  |
| 212,213,214* | Children's Pony EQ, Outreach Sm/Med 2'0, Lg 2'6  |
| 215,216,217* | Pony EQ, Outreach Sm 2'3, Med 2'6, Lg 2'9  |
| 218          | Brookside EQ Ride-off on the flat. All riders who have won a ribbon in an EQ class at this show may enter. <b>NO ENTRY FEE</b> |
| 578,579,580* | Low Children's EQ, 2'6   |
| 581,582,583* | Low Adult EQ, 2'6  |

### Hunter/EQ Warm-Up Classes

All classes \$30

- |     |                |     |     |                             |     |
|-----|----------------|-----|-----|-----------------------------|-----|
| 900 | Warm-Up Hunter | 3'0 | 909 | Warm-Up Hunter              | 2'6 |
| 901 | Warm-Up Hunter | 3'0 | 910 | Warm-Up Hunter              | 2'9 |
| 902 | Warm-Up Hunter | 3'3 | 911 | Warm-Up Hunter              | 2'9 |
| 903 | Warm-Up Hunter | 3'3 | 912 | Warm-Up EQ                  | 3'0 |
| 904 | Warm-Up Hunter | 3'6 | 913 | Warm-Up EQ                  | 2'6 |
| 905 | Warm-Up Hunter | 3'3 | 914 | Warm-Up EQ                  | 2'0 |
| 906 | Warm-Up Hunter | 3'6 | 915 | Warm-Up Hunter              | 2'6 |
| 907 | Warm-Up Hunter | 2'0 | 916 | Warm-Up Jr /Am Xrail Hunter | 1'9 |
| 908 | Warm-Up Hunter | 2'3 | 917 | Warm-Up Hunter Jr/Am        | 2'3 |



**Brookside Opening Day**

April 26-28, 2024

Mailing Address: Brookside Opening Day, 11120 Bradley Ranch Road, Elk Grove, CA 95624

Make checks payable to "Brookside" Closing Date April 12

<b>Horse / Pony Registered Name:</b>	USHJA Reg#:	Measurement: JR Hunter/Pony	SMALL	MED	LARGE
	TIP Reg#:		[ ]	[ ]	[ ]

Color:	Age:	Sex: G M S	Green Status: [ ] 1st [ ] 2nd
--------	------	------------	-------------------------------

<b>OWNER NAME:</b>	<b>Address:</b>	<b>City:</b>	<b>State:</b>	<b>ZIP</b>
--------------------	-----------------	--------------	---------------	------------

<b>EMAIL:</b>	<b>PHONE:</b>
---------------	---------------

<b>TRAINER NAME:</b>	<b>Address:</b>	<b>City:</b>	<b>State:</b>	<b>ZIP</b>
----------------------	-----------------	--------------	---------------	------------

<b>EMAIL:</b>	<b>PHONE:</b>
---------------	---------------

USHJA#:	Exp. Date:	PCHA#:	Exp. Date:	CPHA#:	Exp. Date:	SAHJA#	Exp.Date:
---------	------------	--------	------------	--------	------------	--------	-----------

<b>Rider #1: NAME:</b>	<b>Address:</b>	<b>City:</b>	<b>State:</b>	<b>ZIP</b>
------------------------	-----------------	--------------	---------------	------------

USHJA#:	Exp. Date:	PCHA#:	Exp. Date:	CPHA#:	Exp. Date:	SAHJA#	Exp.Date:	<b>BIRTH DATE:</b>
---------	------------	--------	------------	--------	------------	--------	-----------	--------------------

--	--	--	--	--	--	--	--	--

<b>Rider #2: NAME:</b>	<b>Address:</b>	<b>City:</b>	<b>State:</b>	<b>ZIP</b>
------------------------	-----------------	--------------	---------------	------------

USHJA#:	Exp. Date:	PCHA#:	Exp. Date:	CPHA#:	Exp. Date:	SAHJA#	Exp.Date:	<b>BIRTH DATE:</b>
---------	------------	--------	------------	--------	------------	--------	-----------	--------------------

--	--	--	--	--	--	--	--	--

<b>STABLE WITH TRAINER [ ] OR OTHER:</b>								
--	--	--	--	--	--	--	--	--

<b>PAYEE NAME:</b>	<b>Address:</b>	<b>City:</b>	<b>State:</b>	<b>ZIP</b>
--------------------	-----------------	--------------	---------------	------------

<b>SSN or TAX ID for winnings:</b>	
------------------------------------	--

I/We the undersigned assume full risk and responsibility and agree to indemnify and hold harmless the show venue (Brookside Equestrian Park) and Brookside Show Park, PCHA, SAHJA, CPHA, USHJA OUTREACH, the owners / employees, agents and directors thereof, all and singular from and against any and all liability for injury, loss, costs or expenses or any claims thereof of whatever nature arising or to arise from or on account, or by reason of the entry or entries hereby made by or for myself, person(s) handling or riding my entry, my family, or guests.

All exhibitors agree to abide by the CDFA requirements and the Safe Sport guidelines for this competition.

I/We hereby represent that entry/entries made on behalf of exhibitors under the age of 18, that I/We am one of the parents or a duly appointed legal guardian, and as such entitled to make this entry for or on behalf of such minor exhibitor(s).

**FEES:**  
 Stall @ \$150 each: \$ \_\_\_\_\_  
 Tack @ \$150 each: \$ \_\_\_\_\_  
 Reg/School Fee @ \$50: \$ \_\_\_\_\_  
 Grounds Fee @ \$50/day: \$ \_\_\_\_\_  
 (for horses not using a stall)  
 CDFA Drug Fee @ \$14: \$ \_\_\_\_\_

TOTAL \$ \_\_\_\_\_  
 For Reservations call 916-584-5407

<b>Signatures: Owner:</b>	<b>Trainer:</b>	<b>Rider #1:</b>	<b>Rider #2:</b>

SAHJA/PCHA/USHJA OUTREACH \$10

## HUNTER CLASSES

All classes in these divisions 3'0  
and under are Outreach approved.  
ALL STARRED CLASSES ARE U/S

\*\*\*ALL CLASSES \$30\*\*\*

### Hunt Seat Pleasure Division

Riders in all classes earn points  
toward the Lorraine Smith Series Award of \$500.

260	Mares only	264	18/O
261	Gelding/Stallions only	265	Grey & white horses only
262.	Open	266	Non-grey or white horses only
263.	17/U	267	\$200 Open Championship

## MEDALS

ALL CLASSES \$30

300	SAHJA Ch/Ad Medal (top 4 flat work-off)	3'0
301	SAHJA Pony Medal (2 tests in course)	2'3
302	SAHJA Mini Medal (2 tests in course)	2'6
303	Almaden Farms Jr/Am (2 tests in course)	2'9
304	JRW Jr/Am (flat work in course)	3'3
305	PCHA 14/U (2 tests in course)	3'3
306	PCHA 18-34 (2 tests in course)	3'3
307	PCHA 35/O (2 tests in course)	3'3
308	ONONDARKA 12/U Medal (test top 4)	3'
309	Horse & Hound Pony ( 2 tests in course)	Sm/Med 2'3, Lg 2'6
310	Horse & Hound Jr/Am (2 tests in course)	3'
311	CPHA Foundation EQ (test in course)	3'3
312	CPHA Horsemanship Medal (test in course)	2'6
313	CPHA Jr/Am Hunt Seat Medal (test top 4)	3'6
314	Almaden Farms Jr/Am (2 tests in course)	2'9
315A,B,C	Cloverleaf Jumping Challenge	2'7
316	Madden XRail Medal (testing optional)	1'9
317	SNHSA Mini Medal (2 tests in course)	2'3
318	SNHSA Jr/Am Medal (test top 4)	2'9

## TENTATIVE SCHEDULE

All Classes \$30

All classes 3' and under are Outreach Approved

### FRIDAY

#### HUNTER 1 • 8AM

900	Hunter Warm-Up	3'0	49/50	A/O Hunters 18/O	3'3
17/18	Open Hunters	3'0	47	3'3 Jr Hunters	U/S
19	3'0 Hunters	U/S	51	3'3 A/O Hunters	U/S
901	Hunter Warm-Up	3'0	906	Warm-Up Hunters	3'6
21/22	Green Hunters	3'0	37/38	Jr Hunters 17/U	3'6
23	3' Green Hunters	U/S	41/42	A/O Hunters 18/O	3'6
902	Warm-Up Hunters	3'3	39	3'6 Jr Hunters	U/S
25/26	Performance Hunters	3'3	43	3'6 A/O Hunters	U/S
27	3'3 Performance Hunter	U/S	313	CPHA Jr/Am Hunt Seat Medal (test top 4)	3'6
903	Warm-Up Hunters	3'3	304	JRW Jr/Am Medal (flat work in course)	3'3
29/30	Green Hunters	3'3	311	CPHA Foundation EQ (test in course)	3'3
31	3'3 Green Hunters	U/S			
904	Warm-Up Hunters	3'6			
33/34	Performance Hunters	3'6			
35	3'6 Performance Hunter	U/S			
905	Warm-Up Hunters	3'3			
45/46	Jr Hunters 17/U	3'3			

500 \$5000 Brookside Premier Derby 3'0

#### HUNTER 2 • 8AM

907	Warm-Up Hunters	2'0	11	2'6 Open Hunter	U/S
1/2	Open Hunters	2'0	910	Warm-Up Hunter	2'9
3	2'0 Open Hunter	U/S	13/14	Open Hunter	2'9
908	Warm-Up Hunters	2'3	15	2'9 Hunter	U/S
5/6	Open Hunters	2'3	911	Warm-Up Equitation	2'9
7	2'3 Hunters	U/S	303	Almaden Farms Jr/Am Medal (test in course)	2'9
909	Warm-Up Hunters	2'6			
9/10	Open Hunters	2'6			



All classes 3' and under are Outreach Approved

SATURDAY

HUNTER 1 • 8AM

912 Warm Up EQ	3'0	580 Low Children's EQ	Flat
308 Onondarka Medal 12/U (test top 4)	3'0	583 Low Adult EQ	Flat
310 Horse & Hound Medal Jr/Am (test in course)	3'0	209/210 Novice EQ Jr/Am	2'3
300 SAHJA Ch/Ad Medal (top 4 flat workoff)	3'0	211 Novice EQ Jr/Am	Flat
209/201 EQ 17/U	3'0	260 Hunt Seat Pleasure, Mares	
202 EQ 17/U	Flat	261 Hunt Seat Pleasure, Stallions & Geldings	
203/204 EQ 18/0	3'0	262 Hunt Seat Pleasure, Open	
205 EQ 18/0	Flat	309 Horse & Hound Pony (2 tests in course)	2'3 Sm/Med 2'6 lg
305. PCHA 14/U (2 tests in course)	3'3	215/216 Pony EQ Sm 2'3, Med 2'6, Lg 2'9	
306 PCHA 18-34 (2 tests in course)	3'3	217 Pony EQ	Flat
307 PCHA 35/0 (2 tests in course)	3'3	318 SNHSA Jr/Am Medal (test top 4)	2'9
113 Walk Trot EQ 8/U			
119 Walk Trot EQ Jr/Am			
913 Warm-Up EQ Jr/Am	2'6		
578/579 Low Children's EQ	2'6		
581/582 Low Adult EQ	2'6		

218 Brookside Equitation Ride-Off	Flat
502 \$300 Mike Nielsen Derby	2'6

HUNTER 2 • 8AM

125/126 XRAIL EQ Jr/Am	1'3	100/101 Medium Stirrup EQ 12-17	2'0
127 XRAIL EQ Jr/Am	Flat	102 Medium Stirrup EQ 12-17	Flat
316 Madden XRAIL Medal Jr/Am (test in course)	1'9	107/108 Long Stirrup EQ 18/0	2'0
131/132 SAHJA Jr/Am Mini Stirrup EQ	1'9	109 Long Stirrup EQ 18/0	Flat
133 SAHJA Jr/Am Mini Stirrup EQ	Flat	114 Walk Trot EQ 8/U	
139/140 Poles on the Ground EQ		120 Walk Trot EQ Jr/Am	
141 Poles on the Ground Flat EQ (W/T/C)		301 SAHJA Pony Medal	2'3
914 Warm-Up EQ	2'0	317 SNHSA Mini Medal (test in course)	2'3
206/207 Maiden EQ Jr/Am	2'0	212/213 Children's Pony EQ	Sm/Med 2'0, Lg 2'6
208 Maiden EQ Jr/Am	Flat	302 SAHJA Mini Medal (2 tests in course)	2'6
93/94 Short Stirrup EQ 11/U	2'0	214 Children's Pony EQ	Flat
95 Short Stirrup EQ 11/U	Flat		



All classes 3' and under are Outreach Approved

SUNDAY

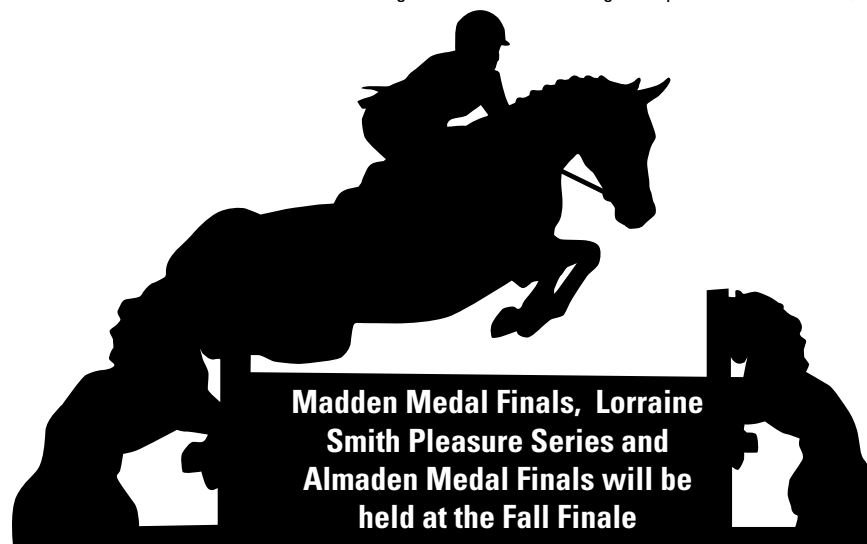
HUNTER 1 • 8AM

915 Warm-Up Hunters	2'6	263 Hunt Seat Pleasure 17/U	
57/58 Low Children's Hunters 17/U	2'6	264 Hunt Seat Pleasure 18/0	
59 Low Children's Hunters	U/S	265 Hunt Seat Pleasure, Grey & White Only	
61/62 Low Adult Hunters 18/0	2'6	266 Hunt Seat Pleasure Non Grey & White Only	
63 Low Adult Hunter	U/S	267 \$200 Hunt Seat Pleasure Open Championship	
312 CPHA Horsemanship (test in course)	2'6	110 Walk Trot Pleasure 8/U	
65/66 Modified Child Adult Hunter	2'9	116 Walk Trot Pleasure Jr/Am	
67 Modified Child Adult Hunter	U/S	917 Warm-Up Hunter Jr/Am	2'3
314 Almaden Farms Jr/Am Medal	2'9	81/82 Novice Hunters Jr/Am	2'3
69/70 Children's Hunters 17/U	3'0	83 Novice Hunters Jr/Am	U/S
71 Children's Hunters	U/S	53/54 Beginning Ch/Ad Hunters	2'3
73/74 A/A Hunter 18/0	3'0	55 Beginning Ch/Ad Hunter	U/S
75 A/A Hunter	U/S	111 Walk Trot Pleasure 8/U	
		117 Walk Trot Pleasure Jr/Am	

HUNTER 2 • 8AM

136/137 Poles on the Ground Hunters		86 Children's Pony Hunters	2'0 Sm/Med, 2'6 Lg
138 Poles on the Ground Hunters U/S (W/T/C)		87 Children's Pony Hunters	U/S
916 Warm-Up Jr/Am XRAIL Hunter	1'3		
122/123 XRAIL Hunter Jr/Am	1'3		
124 XRAIL Hunter Jr/Am	U/S		
128/129 SAHJA Mini Stirrup XRAIL Hunter	1'3		
130 SAHJA Mini Stirrup XRAIL Hunter	U/S		
77/78 Maiden Hunters	2'0		
79 Maiden Hunters	U/S		
85 Children's Pony Hunters	2'0 Sm/Med, 2'6 Lg		

501 Rollison Ranch Hunter Derby	2'0
89/90 Short Stirrup Hunters 11/U	2'0
91 Short Stirrup Hunters	U/S
96/97 Med Stirrup Hunters 12-17	2'0
98 Med Stirrup Hunter	U/S
103/104 Long Stirrup Hunter 18/0	2'0
105 Long Stirrup Hunter	U/S



Madden Medal Finals, Lorraine Smith Pleasure Series and Almaden Medal Finals will be held at the Fall Finale



## TENTATIVE SCHEDULE

All classes 3' and under are USHJA Outreach Approved

FRIDAY		SATURDAY		SUNDAY	
<b>JUMPER • 8AM</b> All classes are OUTREACH approved. All classes table 2.2b unless otherwise noted.		<b>JUMPER • 8AM</b> All classes table 2.2c unless otherwise noted.		<b>JUMPER • 8AM</b> All classes table 2.2.1 unless otherwise noted.	
400	65M	2'0	424	65M	2'0
401	65M (2,2.1)	2'0	425	70M	2'3
402	70M	2'3	426	75M	2'5
403	70M (2,2.1)	2'3	427	80M	2'7
404	75M	2'5	315B	Cloverleaf Jumper Challenge	2'7
405	75M (2,2.1)	2'5	428	85M Muriel Gill	2'9
315a	Cloverleaf Jumper Challenge	2'7	429	90M	2'11
406	80M	2'7	430	95M	3'1
407	80M (2,2.1)	2'7	431	1.0M	3'3
408	85M Muriel Gill	2'9	433	Low Ch/Ad 1.0M	3'3
409	85M Muriel Gill (2,2.1)	2'9	434	1.05M	3'5
410	90M	2'11	435	1.10m	3'7
411	90M (2,2.1)	2'11	449	1.10M Ch/Ad	3'7
412	95M	3'1	437	1.15M	3'9
413	95M (2,2.1)	3'1	438	1.20M	3'11
414	1.0M	3'3	508 Open 80/90M Speed Derby 2'7/2'11		
415	1.0M Low Ch/Ad	3'3			
416	1.05M	3'5			
417	1.05M (2,2.1)	3'5			
418	1.10M	3'7			
419	1.10M (2,2.1)	3'7			
436	1.10m Ch/Ad	3'7			
420	1.15M	3'9			
421	1.15M (2,2.1)	3'9			
422	1.20M	3'11			
423	1.20M (2,2.1)	3'11			
506 Brookside Silky's 5 Bar Jumper Contest Start at .65m					



**Series awards will be presented for Muriel Gill, Andrea Barbee Jumper Series, Almaden Medal Finals and Cloverleaf Jumper Challenge Finals at Fall Finale"**

## RULES & REGULATIONS

**RULES OF THE PCHA, USHJA OUTREACH, SAHJA and CPHA** will be followed. Decisions of judges and management are final.

**ENTRY FEES:** All regular classes are \$30, see special classes for those entries. Stalls are available for \$150 for the show and \$50 per day for day stalls. A \$50 schooling fee, \$3 SAHJA fee, \$3 PCHA fee, \$14 CA Drug fee, \$3 USHJA fee, will be charged to each horse. Checks should be made out to Brookside.

**POST ENTRIES:** will be accepted with no additional charge.

**STALLS:** exhibitors requiring stalls should notify the show of their stall requirements by April 17.

**AWARDS:** prizes to all 1st place winners, ribbons through 8th place in all classes.

**DRIVERS:** no one without a valid drivers license may drive any golf cart or car/truck on the show grounds.

**SCHOOLING:** rings will be available for schooling from 8am-6pm the day before the show and any morning or evening during the show when the rings are not closed.

**ATTIRE:** boots, collared shirts, USEF approved helmets, breeches required.

**DOGS:** all dogs must be on leashes, non-compliance will incur a \$50 fine.

Classes with less than 3 entries may be combined or canceled at management's discretion.

**FEED/BEDDING & RV PARKING:** For information related to feed and bedding as well as for golf cart, RV and/or space rentals, RV parking, contact the Brookside office at 916-682-1403.

**REFUNDS:** all refund requests should be submitted in writing. Any monies paid prior to April 12 closing date may be refunded.

**PARKING AREAS:** parking areas are designated and violators can be towed.

**BARN AISLES:** no vehicles or trailers of any kind allowed in barn aisles.

**NON-SHOWING HORSES:** all non-showing horses must complete a "non-showing" form, sign a release, pay a \$50 facility fee if not using a stall and pay a \$50 schooling fee.

**ADD/SCRATCHES:** allowed at the gate, but must be completed in the office by 4pm daily to avoid being charged. On Sunday, no add/scratches allowed at the gate.



## Got Coffee?

**Make sure to come by the Sugar Shack!  
Open at 7am on Show Days**

**Lattes • Mochas • Gourmet Teas  
Iced Teas • Hot Cocoa • Italian Soda**

Any drink can be ICED!!

"You can't buy happiness, but you can buy coffee from happy people and that's pretty close!"

**THE FALL FINALE WILL BE A USHJA OUTREACH FESTIVAL EVENT.**

**Opening Day is happy to offer our riders the opportunity to be a part of the USHJA Outreach program**

Riders may earn points toward year-end rewards & awards and the chance to participate in USHJA national championships  
Opening Day is a category 1 event, USHJA Outreach sanctioned classes, offered within an existing competition not affiliated with the USEF

**Following are Outreach classes/divisions offered at Pre-Season:**

- **Hunters:** walk trot poles, 18"hunters, 2' hunters, 2'3 hunters, 2'6 hunters, 2'9 hunters, 3' hunters
- **Equitation:** walk trot, walk trot canter, 18"x rails, 2' eq., 2'3 Eq, 2'6 eq., 2'9 Eq., 3' Eq.
- **Jumpers:** 60m, 65m, 70m, 75 & 80m, 85m, 90 & 95m, 1.0 & 1.05m, 1.10 & 1.15m, 1.20m
- **Hunter Derby:** these may be offered at 18", 2', 2'3, 2'6, 2'9

Any rider may compete in Outreach designated hunter, jumper & equitation classes. But riders wanting to earn Outreach points, must be USHJA members at the free Outreach level (or higher). Riders may fill out a membership application at the show or online at USHJA.org.



Pacific Coast Horse Show Association  
P.O. Box 5570, Glendale, CA 91221  
(818) 842-8194

**MEMBERSHIP APPLICATION**

- NEW       RENEWAL
- Senior: \$85.00       Junior/Western Junior: \$85.00       Life: \$1,000.00
- SPECIAL – Senior for 3 years: \$200.00       SPECIAL – Junior for 3 years: \$150.00\*  
\*No increase if a junior becomes a senior during 3 year plan
- STEWARD       SHOW MANAGER       SHOW CONTACT

NAME \_\_\_\_\_

ADDRESS \_\_\_\_\_

CITY / STATE \_\_\_\_\_ ZIP \_\_\_\_\_

TELEPHONE \_\_\_\_\_ E-MAIL \_\_\_\_\_

DATE OF BIRTH REQUIRED \_\_\_\_\_

- Amateur       Professional       Hunter/Jumper       Western

CREDIT CARD VISA \_\_\_\_\_ MC \_\_\_\_\_ # \_\_\_\_\_ Check# \_\_\_\_\_

NAME ON CARD \_\_\_\_\_

BILLING ADDRESS \_\_\_\_\_

EXPIRATION DATE \_\_\_\_\_ 3 DIGIT CODE \_\_\_\_\_

NAME OF TRAINER \_\_\_\_\_



Pacific Coast Horse Show Association  
P.O. Box 5570, Glendale, CA 91221  
(818) 842-8194

**HORSE REGISTRATION**

Horse must be registered to complete for Year End Awards

SHOW NAME OF HORSE \_\_\_\_\_

- Hunter/Jumper       Western

Color \_\_\_\_\_ Sex \_\_\_\_\_ Ht. \_\_\_\_\_ Yr. Foaled \_\_\_\_\_ Breed \_\_\_\_\_

OWNER OF HORSE \_\_\_\_\_

(OWNER MUST BE PCHA MEMBER)

- YEARLY REGISTRATION: \$40.00       LIFETIME REGISTRATION: 100.00

- SHOW NAME CHANGE: \$10.00

FORMER NAME \_\_\_\_\_

- TRANSFER OF OWNERSHIP: \$10.00

FORMER OWNER \_\_\_\_\_



# Just B @ Brookside

*Where friends are made for a lifetime*

## Brookside Opening Day

April 26-28

APPROVED BY #605 USHJA OUTREACH,  
SNHSA, TIP, PCHA, CPHA, SAHJA

First show of the 2024  
Hunter/Jumper season at Brookside  
feature event the Equitation Ride-Off

## Always Fun Inc. Beach Party

June 5-9

#430 USHJA OUTREACH, PCHA, SAHJA,  
TIP, CPHA, SNHSA RATED

featuring  
the Brookside Jumper Challenge  
The Running of the Flamingos  
Palm Tree Equitation  
Flamingo Equitation  
Bitsy Shields Equitation Challenge

## Brookside Splash

June 14-16

APPROVED BY SAHJA,  
#452 USHJA OUTREACH,  
SAHJA, SNHSA

## Brookside Back to School

Sept 7-8

APPROVED BY  
#453 USHJA OUTREACH,  
TIP, SNHSA, SAHJA

featuring  
Acorn Equitation  
Rollison Ranch 3' Derby

## Brookside Fall Finale

Oct 10-13

APPROVED BY PCHA,  
#454 USHJA OUTREACH,  
CPHA, TIP, SNHSA, SAHJA  
USHJA OUTREACH FESTIVAL  
Cloverleaf Jumper Finals  
Finals Muriel B. Gill and  
Andrea Barbee Jumper Series  
Madden XRail Medal Finals  
Lorraine Smith  
Pleasure Series Finals  
Almaden Medal Finals

**BROOKSIDE SHOW PARK**

11120 BRADLEY RANCH ROAD

ELK GROVE, CA 95624